



MORGAN AND MORECAMBE OFFSHORE WIND FARMS: TRANSMISSION ASSETS

Outline Construction Traffic Management Plan **F05**F06



Deadline **6:7**
2229 October 2025
Rev: **F05**F06

MRCNS-J3303-RPS-10074A
MOR001-FLO-CON-ENV-PLN-0055

PINS Reference: EN020028
APFP Regulations: 5(2)(j)
Document reference: J5/**F05**F06

Document status					
Version	Purpose of document	Approved by	Date	Approved by	Date
F01	For issue	AS	September 2024	IM	September 2024
F02	Deadline 2	HK	June 2025	IM	June 2025
F03	Deadline 4	HK	August 2025	IM	August 2025
F04	Deadline 5	GL	September 2025	IM	September 2025
F05	Deadline 6	GL	October 2025	IM	October 2025
F06	Deadline 7	GL	29 October 2025	IM	29 October 2025

The report has been prepared for the exclusive use and benefit of the Applicants and solely for the purpose for which it is provided. Unless otherwise agreed in writing by RPS Group Plc, any of its subsidiaries, or a related entity (collectively 'RPS') no part of this report should be reproduced, distributed or communicated to any third party. RPS does not accept any liability if this report is used for an alternative purpose from which it is intended, nor to any third party in respect of this report. The report does not account for any changes relating to the subject matter of the report, or any legislative or regulatory changes that have occurred since the report was produced and that may affect the report.

The report has been prepared using the information provided to RPS by its client, or others on behalf of its client. To the fullest extent permitted by law, RPS shall not be liable for any loss or damage suffered by the client arising from fraud, misrepresentation, withholding of information material relevant to the report or required by RPS, or other default relating to such information, whether on the client's part or that of the other information sources, unless such fraud, misrepresentation, withholding or such other default is evident to RPS without further enquiry. It is expressly stated that no independent verification of any documents or information supplied by the client or others on behalf of the client has been made. The report shall be used for general information only.

Prepared by:

RPS (F01)
Haskoning (~~F05~~[F06](#) update)

Prepared for:

Morgan Offshore Wind Limited,
Morecambe Offshore Windfarm Ltd

Contents

1	OUTLINE CONSTRUCTION TRAFFIC MANAGEMENT PLAN	1
1.1	Background	1
1.1.1	Introduction	1
1.1.2	Project overview	1
1.1.3	Purpose of the Outline Construction Traffic Management Plan	3
1.1.4	Structure of this document	6
1.1.5	Implementation of the Outline Construction Traffic Management Plan	6
1.2	Roles and responsibilities	8
1.2.1	Overview	8
1.2.2	Applicants	8
1.2.3	CTMP Co-ordinators	9
1.2.4	Contractors/Subcontractors	9
1.3	Scope of this OCTMP	9
1.4	Management of HGV movements	10
1.4.1	Vehicle types	10
1.4.2	Vehicle routing	10
1.4.3	Timing of HGV movements	13
1.4.4	Reducing the impact of HGV Numbers	16
1.4.5	Driver inductions	17
1.5	Control of material on the highway	17
1.6	Management of abnormal indivisible loads	18
1.7	Management of incidents	20
1.8	Management of construction workforce movements	24
1.8.1	Construction workforce travel	24
1.8.2	Timing of LV movements	24
1.9	Site accesses and Compounds	22
1.9.1	Design	22
1.10	Last Leg Mitigation Measures	23
1.11	Parking Management Measures	30
1.12	Highway crossings	30
1.12.1	Onshore export cable corridor and 400 kV grid connection cable corridor highway crossing locations and operation	30
1.12.2	Agreement, management, and advance notification	32
1.12.3	Haul road and its crossings with the highway	32
1.12.4	Public rights of way	32
1.12.5	Preston Guild Wheel cycle route	33
1.12.6	Starr Gate access	33
1.13	Management of highway safety	33
1.13.1	Existing accident record	33
1.13.2	Monitoring and mitigation for Transmission Assets	34
1.13.3	Highway condition	34
1.14	Transport Working Group	35
1.15	Monitoring of the CTMP	36
1.15.1	Compliance and monitoring	36
1.15.2	HGV numbers	36
1.15.3	HGV routing	36
1.15.4	Employee monitoring	37
1.15.5	Monitoring records	37
1.15.6	Enforcement and corrective measures	38
1.16	References	40
1	OUTLINE CONSTRUCTION TRAFFIC MANAGEMENT PLAN	1

1.1	Background	1
1.1.1	Introduction	1
1.1.2	Project overview	1
1.1.3	Purpose of the Outline Construction Traffic Management Plan	3
1.1.4	Structure of this document	6
1.1.5	Implementation of the Outline Construction Traffic Management Plan	6
1.2	Roles and responsibilities	9
1.2.1	Overview	9
1.2.2	Applicants	9
1.2.3	CTMP Co-ordinators	9
1.2.4	Contractors/Subcontractors	10
1.3	Scope of this OCTMP	10
1.4	Management of HGV movements	10
1.4.1	Vehicle types	10
1.4.2	Vehicle routing	11
1.4.3	Timing of HGV movements	14
1.4.4	Reducing the impact of HGV Numbers	17
1.4.5	Driver inductions	17
1.5	Control of material on the highway	18
1.6	Management of abnormal indivisible loads	19
1.7	Management of incidents	20
1.8	Management of construction workforce movements	21
1.8.1	Construction workforce travel	21
1.8.2	Timing of LV movements	22
1.9	Site accesses and Compounds	23
1.9.1	Design	23
1.10	Last Leg Mitigation Measures	24
1.11	Parking Management Measures	30
1.12	Highway crossings	30
1.12.1	Onshore export cable corridor and 400 kV grid connection cable corridor highway crossing locations and operation	30
1.12.2	Agreement, management, and advance notification	32
1.12.3	Haul road and its crossings with the highway	32
1.12.4	Public rights of way	32
1.12.5	Preston Guild Wheel cycle route	33
1.12.6	Starr Gate access	33
1.13	Management of highway safety	33
1.13.1	Existing accident record	33
1.13.2	Monitoring and mitigation for Transmission Assets	34
1.13.3	Highway condition	34
1.14	Transport Working Group	36
1.15	Monitoring of the CTMP	37
1.15.1	Compliance and monitoring	37
1.15.2	HGV numbers	37
1.15.3	HGV routing	37
1.15.4	Employee monitoring	38
1.15.5	Monitoring records	38
1.15.6	Enforcement and corrective measures	39
1.16	References	41

Diagrams

Diagram 1.1: Portable traffic signals on a two-lane single carriageway road	31
Diagram 1.1: Portable traffic signals on a two-lane single carriageway road	31

Appendices

APPENDIX A : INDICATIVE CONSTRUCTION VEHICLE ROUTE PLAN	41
APPENDIX B: ADDITIONAL INDICATIVE HGV ROUTES PLAN	43
APPENDIX C: LAST LEG MITIGATION MEASURES (EXCLUDING ASSOCIATED LINING AND SIGNING)	45
APPENDIX A : INDICATIVE CONSTRUCTION VEHICLE ROUTE PLAN	42
APPENDIX B: ADDITIONAL INDICATIVE HGV ROUTES PLAN	44
APPENDIX C: LAST LEG MITIGATION MEASURES (EXCLUDING ASSOCIATED LINING AND SIGNING)	46

Glossary

Term	Meaning
400 kV grid connection cable corridor	The corridor within which the 400 kV grid connection cables will be located.
Abnormal Indivisible Loads	Loads or vehicles that exceed maximum vehicle weight, axle weight or dimensions as set out in the Road Vehicles (Construction and Use) Regulations 1986 as amended.
Applicants	Morgan Offshore Wind Limited (Morgan OWL) and Morecambe Offshore Windfarm Ltd (Morecambe OWL).
Banksperson	A banksperson (commonly also known as a banksman or traffic marshal) should be a qualified person appointed for the general purposes of directing traffic, plant and pedestrian access to manage potential traffic conflicts and ensure safety for all highway users. All banksperson(s) appointed by the Applicants and/or their contractor(s) will, at all times, have a valid A73: Plant and Vehicle Marshaller qualification, Competent Operator 'blue' Construction Plant Competence Scheme (CPCS) card, together with a relevant level 2 National Vocation Qualification (NVQ) certification (or equivalent).
Commitment	This term is used interchangeably with mitigation and enhancement measures. The purpose of commitments is to avoid, prevent, reduce or, if possible, offset significant adverse environmental effects. Primary and tertiary commitments are taken into account and embedded within the assessment set out in this Environmental Statement. Secondary commitments are incorporated to reduce effects to environmentally acceptable levels following initial assessment.
Emergency Services	The term 'emergency services' in this oCTMP is used to refer to Lancashire Constabulary, Lancashire Fire and Rescue Service, the North West Ambulance Service NHS Trust, and the Royal National Lifeboat Institution.
Environmental Statement	The document presenting the results of the Environmental Impact Assessment process.
Generation Assets	The generation assets associated with the Morgan Offshore Wind Project and the Morecambe Offshore Windfarm include the offshore wind turbines, inter-array cables, offshore substation platforms and platform link (interconnector) cables to connect offshore substations.
Haul road	The haul road will provide vehicle access along the onshore export cable corridor and 400 kV grid connection cable corridor off the public highway and will be used where needed throughout the installation of the onshore export cables and 400 kV Grid Connection Cable. The haul road will be 6 m wide (excluding passing places).
Highway Authorities	Lancashire County Council and Blackpool Borough Council as the Local Highway Authority and National Highways as the highway authority for the strategic network collectively referred to as the Highway Authorities.

Term	Meaning
Landfall	The area in which the offshore export cables make landfall (come on shore) and the transitional area between the offshore cabling and the onshore cabling. This term applies to the entire landfall area at Lytham St. Annes between Mean Low Water Springs and the transition joint bays inclusive of all construction works, including the offshore and onshore cable routes, intertidal working area and landfall compound(s).
Local Highway Authority	A body responsible for the public highways in a particular area of England and Wales, as defined in the Highways Act 1980.
Local Planning Authority	The local government body (e.g., Borough Council, District Council, etc.) responsible for determining planning applications within a specific area.
Mean High Water Springs	The height of mean high water during spring tides in a year.
Mean Low Water Springs	The height of mean low water during spring tides in a year.
Mobilisation period	Period before and after standard construction working hours for deliveries, arrival of construction workers etc
Morecambe Offshore Windfarm: Transmission Assets	The offshore export cables, landfall and onshore infrastructure required to connect the Morecambe Offshore Windfarm to the National Grid.
Morgan Offshore Wind Project: Transmission Assets	The offshore export cables, landfall and onshore infrastructure required to connect the Morgan Offshore Wind Project to the National Grid.
Morgan and Morecambe Offshore Wind Farms: Transmission Assets	<p>The offshore and onshore infrastructure connecting the Morgan Offshore Wind Project and the Morecambe Offshore Windfarm to the national grid. This includes the offshore export cables, landfall site, onshore export cables, onshore substations, 400 kV grid connection cables and associated grid connection infrastructure such as circuit breaker compounds.</p> <p>Also referred to in this report as the Transmission Assets, for ease of reading.</p>
Morgan and / or Morecambe Highways Support Officer	A Lancashire County Council employee, funded by a Planning Performance Agreement provided by the Morgan and Morcambe Offshore Wind Farms Transmission Assets Project, whose remit is solely dedicated to the Morgan and Morecambe Offshore Wind Farms: Transmission Assets Project to monitor the construction impacts of the project, (including the Development), in so far as they relate to the Local Highway Network for the duration of construction (including agreement of initial brief for highway inspection and through to delivery of highway rectification works post-project delivery)
Onshore export cable corridor	The corridor within which the onshore export cables will be located.
Onshore substation	The onshore substations will include a substation for the Morgan Offshore Wind Project: Transmission Assets and a substation for the Morecambe Offshore Windfarm: Transmission Assets. These will each comprise a compound containing the electrical components for transforming the power supplied from the generation assets to 400 kV and to adjust the power quality and power factor, as required to meet the UK Grid Code for supply to the National Grid.
Outline Construction Traffic Management Plan	A plan establishing vehicle routing and to ensure that vehicles can safely access the onshore elements of Transmission Assets.

Term	Meaning
Transmission Assets Order Limits	The area within which all components of the Transmission Assets will be located, including areas required on a temporary basis during construction and/or decommissioning (such as construction compounds).

Acronyms

Acronym	Meaning
AILs	Abnormal Indivisible Loads
CCWG	Construction Coordination Working Group
CLO	Community Liaison Officer
CoT	Commitment
CTMP	Construction Traffic Management Plan
CTMPCo	Construction Traffic Management Plan Co-ordinator
DCO	Development Consent Order
ES	Environmental Statement
ESDAL	Electronic Service Delivery for Abnormal Loads
GPS	Global Positioning System
HGVs	Heavy Goods Vehicle
HDD	Horizontal Directional Drilling
LCC	Lancashire County Council
M&MHSO	Morgan and/or Morecambe Highways Support Officer
OCTMP	Outline Construction Traffic Management Plan
PRoW	Public Rights of Way

Units

Unit	Description
kV	Kilovolt
m	Metres

1 Outline construction traffic management plan

1.1 Background

1.1.1 Introduction

1.1.1.1 This document forms the Outline Construction Traffic Management Plan (OCTMP) prepared for the Morgan and Morecambe Offshore Wind Farms: Transmission Assets (referred to hereafter as ‘the Transmission Assets’).

1.1.1.2 The OCTMP was updated for Deadline 4 to include the following:

- Clarification of the roles and responsibilities for implementing this outline management plan; and
- Clarification of the measures within this outline management plan that will be implemented during the onshore site preparation works.

1.1.1.3 The OCTMP has been updated for Deadline 5 to include the following:

- Clarification of the roles and responsibilities of the Construction Traffic Management Plan Co-ordinator;
- Details of the commitments relevant to this OCTMP;
- Details of the Construction Coordination Working Group; and
- The removal of the access A57 via the Preston Guild Wheel.

1.1.1.4 The OCTMP has been updated for Deadline 6 to include the following:

- Clarification of the Construction Coordination Working Group membership;
- Amendments in regard to commitments to vehicle tracking and use or dash cameras (dashcams);
- Details of potential waiting areas for HGVs;
- Details of mitigation options for the last leg mitigation measures;
- Clarifications of the timescale for the agreement and implementing highway remediation measures;
- Details of the proposed content of monitoring reports; and
- Clarifications of the approach to corrective action.

1.1.1.5 The OCTMP has been updated for Deadline 7 to include the following:

- Details of the remit of an LCC Morgan and Morecambe Highways Support Officer and the mechanisms for funding the role.

1.1.2 Project overview

1.1.2.1 Morgan Offshore Wind Limited (Morgan OWL), a joint venture between JERA Nex bp (JNbp) and Energie Baden-Württemberg AG (EnBW), is

-
- developing the Morgan Offshore Wind Project. The Morgan Offshore Wind Project is a proposed offshore wind farm in the east Irish Sea.
- 1.1.2.2 Morecambe Offshore Windfarm Ltd (Morecambe OWL), owned by Copenhagen Infrastructure Partners' (CIP) fifth flagship fund, Copenhagen Infrastructure V (CI V), is developing the Morecambe Offshore Windfarm, also located in the east Irish Sea.
- 1.1.2.3 The purpose of the Transmission Assets is to connect the Morgan Offshore Wind Project: Generation Assets and Morecambe Offshore Windfarm: Generation Assets (referred to collectively as the 'Generation Assets') to the National Grid.
- 1.1.2.4 Morgan OWL and Morecambe OWL (the Applicants), are jointly developing a single consent application for transmission assets associated with each of the generation assets, including offshore export cable corridors to landfall and aligned onshore export cable corridors to onshore substation and onward connection to the National Grid at Penwortham, Lancashire.
- 1.1.2.5 The key components of the Transmission Assets include offshore elements, landfall and onshore elements. Details of the activities and infrastructure associated with the Transmission Assets are set out in Volume 1, Chapter 3: Project Description of the Environmental Statement (ES) (document reference F1.3).
- 1.1.2.6 This OCTMP has been developed for onshore elements of the Transmission Assets, landwards of Mean High Water Springs (MLWS). The elements of the Transmission Assets relevant to this plan are:
- Landfall:
 - landfall site: this is where the offshore export cables are joined to the onshore export cables via the transition joint bays. This term applies to the entire area between Mean Low Water Springs (MLWS) and the transition joint bays.
 - Onshore elements:
 - onshore export cables: these export cables will be joined to the offshore export cables via the transition joint bays at the landfall site, and will bring the electricity generated by the Generation Assets to the onshore substations;
 - onshore substations: the two electrically separate onshore substations will contain the components for transforming the power supplied via the onshore export cables up to 400 kV; and
 - 400 kV grid connection cables: these export cables will bring the electricity generated by the Generation Assets from the two electrically separate onshore substations to the existing National Grid substation at Penwortham.
- 1.1.2.7 Full details of the activities and infrastructure associated with the Transmission Assets are set out in Volume 1, Chapter 3: Project Description of the Environmental Statement.

1.1.3 Purpose of the Outline Construction Traffic Management Plan

- 1.1.3.1 This OCTMP contains the control measures and monitoring procedures for managing the potential traffic and transport impacts of constructing the Transmission Assets.
- 1.1.3.2 The purpose of the OCTMP is to set out how the numbers and routing of Heavy Goods Vehicles (HGVs) will be managed during the construction phase, how the movement of construction worker traffic will be managed during the construction phase, details of measures to manage the safe passage of HGV traffic via the local highway network and details of localised road improvements if and where these may be necessary to facilitate safe use of the existing road network.
- 1.1.3.3 This OCTMP will form the basis for detailed CTMPs, which will be prepared in consultation with Lancashire County Council and Blackpool Borough Council as the Local Highway Authorities and National Highways as the highway authority for the strategic road network (herein collectively referred to as the highway authorities).
- 1.1.3.4 This OCTMP has been drafted based on Volume 3, Chapter 7: Traffic and transport of the Environmental Statement (ES).
- 1.1.3.5 This OCTMP references the following documents:
- Volume 3, Chapter 7: Traffic and transport of the ES.
 - Outline Highways Access Management Plan (document reference J8).
 - Outline Code of Construction Practice (document reference J1).
- 1.1.3.6 All commitments identified for the Transmission Assets are detailed in the Volume 1, Annex 5.3 Commitment register of the ES (document reference F1.5.3) and summarised within each topic chapter of the ES. The commitments of relevance to this OCTMP, are set out in **Table 1.1** below. These will be included within and developed further as part of detailed CTMP(s).

Table 1.1: Commitments relevant to this CTMP

Commitment number	Measures adopted	How the measure is secured	Where is the commitment referenced within the document
CoT24	Where practicable, during construction, access routes within the onshore export cable corridor and 400kV grid connection corridor (i.e. for example, the use of haul roads) will be used, to minimise potential impacts to the local road network.	DCO Schedules 2A & 2B, Requirement 9 (Traffic and Transport); Access to Works Plan	Section 1.4.2 provides details of the proposed access routes.
CoT38	<p>An Outline Construction Traffic Management Plan (CTMP) has been prepared and submitted with the application for development consent. CTMP(s) will be developed in accordance with the outline CTMP prior to construction. The detailed CTMP(s) will set out measures to include:</p> <ol style="list-style-type: none"> 1. managing the numbers and routing of HGVs during the construction phase; 2. managing the movement of construction worker traffic during the construction phase; 3. details of measures to manage the safe passage of HGV traffic via the local highway network; 4. details of localised road improvements if and where these may be necessary to facilitate safe use of the existing road network; and 5. appointment of a Construction Traffic Management Plan Co-ordinator and Transport Working Group. 	DCO Schedules 2A & 2B, Requirement 9 (Traffic and Transport)	<p>Section 1.4 outlines the approach to managing the numbers and routing of HGVs during the construction phase.</p> <p>Section 1.8 outlines the approach to managing the movement of construction worker traffic during the construction phase.</p> <p>Section 1.10 details of measures to manage the safe passage of HGV traffic via the local highway network and details of localised road improvements if and where these may be necessary to facilitate safe use of the existing road network.</p> <p>Section 1.2.3 outlines the requirements to appointment of a Construction Traffic Management Plan Co-ordinator and Section 1.14 outlines the approach to establishing a Transport Working Group.</p>
CoT138	The Applicants will establish a Construction Coordination Working Group (CCWG) to provide a forum for post-consent engagement between the Applicants and the local planning authorities and ensure consideration is given to the potential for coordination (where appropriate) between the projects. This will ensure that the planning authorities are engaged, and can provide input, throughout the Applicants' process of preparing information to discharge requirements of the made Order. The CCWG will facilitate discussion of detailed management plans and enable feedback on how comments have been addressed between each of the Applicants.	<p>DCO Schedules 2A & 2B, Requirement 25 (Onshore collaboration).</p> <p>DCO Schedules 2A & 2B, Requirement 6 (Provision of landscaping);</p> <p>DCO Schedules 2A & 2B, Requirement 8</p>	Section 1.1.5 provides details on the establishment of a CCWG.

Commitment number	Measures adopted	How the measure is secured	Where is the commitment referenced within the document
		(Code of Construction Practice, Onshore archaeology, Ecological management plan). DCO Schedules 2A & 2B, Requirement 9 (Traffic and Transport).	

1.1.4 Structure of this document

1.1.4.1 This document is set out as follows:

- **Section 1.1** presents an introduction to the OCTMP;
- **Section 1.2:** presents roles and responsibilities;
- **Section 1.3** presents the scope of this OCTMP;
- **Section 1.4** presents the details of the approach to the management of HGVs;
- **Section 1.5** presents details of measures to control materials deposited on the highway;
- **Section 1.6** presents the details of the approach to the management of Abnormal Indivisible Loads (AILs);
- **Section 1.7** includes details of measures to manage the traffic movements during planned and unplanned events on the highway;
- **Section 1.8** presents the approach to the management of construction workforce movements (an outline workforce Travel Plan);
- **Sections 1.9 to 1.11** presents details of the approach to the delivery of site accesses, crossings, compounds and offsite highway works;
- **Section 1.13** presents details of the approach to the management of highway safety;
- **Section 1.14** outlines a proposed strategy to assist in coordinating cumulative schemes; and
- **Section 1.14** presents the implementation and monitoring and enforcement of the OCTMP.

1.1.5 Implementation of the Outline Construction Traffic Management Plan

DCO Requirements

1.1.5.1 Subject to the granting of consent for the Transmission Assets, detailed Construction Traffic Management Plan(s) (CTMP) will be prepared on behalf of Morgan OWL and/or Morecambe OWL, prior to commencement of the relevant stage of works and will follow the principles established in this OCTMP. The detailed CTMP(s) will require approval by the highway authorities. [The detailed CTMP\(s\) will be a live document, incorporating changes as required during the projects following approval by the relevant highway authorities.](#)

1.1.5.2 The Applicants have committed to implementation of detailed CTMP(s) via the following commitment, CoT38 (see Volume 1, Annex 5.3: Commitments Register, (document reference S_D2_15/F04), and is

secured by inclusion of Requirement 9 of the draft Development Consent Order (DCO) (document reference C1) Schedules 2A & 2B.

1.1.5.3 Below sets out the requirement wording for Morgan Transmission Assets (referred to as Project A in the draft DCO). Morecambe Transmission Assets (Project B) requirements mirror those of Project A for this requirement and are, therefore, not repeated):

(9) —(1) *No stage of the Project A onshore works may commence until for that stage a construction traffic management plan (which must be in accordance with the outline construction traffic management plan), as appropriate for the relevant stage, has for that stage been submitted to and approved by the relevant highway authority or in respect of the strategic road network in consultation with National Highways.*

(2) Any plan submitted under sub-paragraph (1) may cover one or more stage of the Project A onshore works.

(3) Each plan approved under sub-paragraph (1) must be implemented upon commencement of the relevant stage of the Project A onshore works.

(4) Onshore site preparations works must only take place in accordance with the relevant details set out in the outline construction traffic management plan.

1.1.5.4 The Transmission Assets may adopt a staged approach to the approval of DCO requirements enabling requirements to be approved in part or in whole, prior to the commencement of the relevant stage of works according to whether a staged approach is to be taken to the delivery of each of the offshore wind farms.

1.1.5.5 For onshore and intertidal works this approach will be governed by the inclusion of Requirement 3 within the draft DCO, which requires notification to be submitted to the relevant planning authority/authorities detailing whether Project A or Project B relevant works will be constructed in a single stage; or in two or more stages to be approved prior to the commencement of the authorised development.

Morgan and/or Morecambe Highways Support Officer

1.1.5.6 Following the DCO award and prior to commencement of construction or approval of any required details (design or documents), including the CTMP, the applicants would provide funding to Lancashire County Council as LHA via a Planning Performance Agreement, for the provision of a Morgan and Morecambe Highways Support Officer (M&MHSO). The funding will be sufficient to support a LCC highways post, for the duration of construction of the projects. The M&MHSO will address the requirement for ongoing collaborative work, required to ensure the best management and successful delivery of projects in line with the CTMP.

Construction Coordination Working Group

~~1.1.5.6~~[1.1.5.7](#) Following DCO award and prior to the commencement of construction, the Applicants would establish a Construction Coordination Working Group (CCWG). The CCWG will provide a forum for post-consent engagement between the Applicants and the local planning authorities, to ensure consideration is given to the potential for coordination (where appropriate) between the projects. This will ensure that the planning authorities are engaged, and can provide input, throughout the Applicants' process of preparing information to discharge requirements of the made Order. In particular, the CCWG will facilitate discussion of detailed management plans and enable feedback on how comments have been addressed between each of the Applicants, specifically in the context of Requirement 25 (onshore collaboration) in Schedules 2A and 2B of the draft DCO.

~~1.1.5.7~~[1.1.5.8](#) Relevant planning authorities will be requested to nominate staff and invite relevant third parties i.e. stakeholders where discussions and feedback on detailed management plans may be relevant to those parties. In so far as it is relevant, the M&MHSO may liaise and consult with local Parish councils to bring relevant existing issues on the highway network that could be exacerbated as a consequence of the construction of project(s). The costs of attendance at meetings and engagement by the relevant planning authorities will be covered by post-consent Planning Performance Agreements. The membership of the CCWG will be kept under review throughout construction, with members added or removed as required. Where matters relate to traffic and transport, the highway authorities (inc. M&MHSO for Lancashire County Council) would be invited to the CCWG.

~~1.1.5.8~~[1.1.5.9](#) It is proposed that CCWG meetings will be monthly, unless agreed otherwise between the members of the CCWG.

~~1.1.5.9~~[1.1.5.10](#) Topics for discussion will include the exploration of opportunities and measures for coordination between the projects in relation to:

- Indicative programming and staging of construction
- Survey planning and findings
- Requests for specific post consent information to inform the discharge of requirements
- Progress on design (e.g. onshore substation design, design of environmental mitigation areas)
- Update on engagement with statutory consultees
- Other consents or licences
- Construction implementation, including feedback on monitoring and complaints
- Requests for specific post consent information to inform the discharge of requirements

-
- Outputs of Requirement 25 (Onshore collaboration).

1.2 Roles and responsibilities

1.2.1 Overview

- 1.2.1.1 The key roles and associated responsibilities with regard to this OCTMP are set out below. The Construction (Design and Management) Regulations 2015 also identify the legal duties, responsibilities and obligations of all the major roles within the construction team. The responsibilities of each role will be refined in the detailed CTMPs.

1.2.2 Applicants

- 1.2.2.1 The Applicants will be responsible for the following:
- Ensuring that the CTMP(s) are implemented effectively;
 - Giving necessary direction to contractors (for example, setting contractual obligations); and
 - Preparing the detailed CTMP(s) and undertaking reviews and refining the CTMPs (where necessary) in conjunction with the Principal Contractors.

1.2.3 CTMP Co-ordinators

- 1.2.3.1 CTMP Co-ordinators (CTMPCos) will be appointed by Morgan OWL and Morecambe OWL. The CTMPCo(s) key responsibilities will include:
- Managing the implementation of the detailed CTMP(s);
 - Collating monitoring data and preparing monitoring reports (as outlined in Section 1.15.1);
 - Assisting the Community Liaison Officer in responding to comments from the local community;
 - Regular liaison and reporting to the Applicants;
 - Sharing information with emergency services e.g. dates of any road works, abnormal load movements, etc;
 - Monitoring and enforcing non-compliance;
 - Establishing and administering the Transport Working Group (see Section 1.14 for details);
 - Supporting with highway stakeholder engagement; and
 - Acting as a point of contact for construction workers and sub-contractors.
- 1.2.3.2 The CTMPCo(s) would also be assisted in their roles by a Community Liaison Officer (CLO). The Community Liaison Officer will be the dedicated contact for liaising with residents and local businesses and will be responsible for implementing the approved Communications Plan (refer to Outline Communications Plan, document reference J1.1).

1.2.4 Contractors/Subcontractors

- 1.2.4.1 Contractors and subcontractors will be required to understand their responsibilities and implement the measures within the outline and detailed CTMP(s).

1.3 Scope of this OCTMP

- 1.3.1.1 Onshore site preparation works are defined in Article 2 of the draft DCO (document reference C1). This OCTMP applies to the onshore site preparation works and construction activities for the Transmission Assets located landward of Mean Low Water Springs (MLWS) and does not consider impacts seaward of MLWS.
- 1.3.1.2 Onshore site preparation works will be undertaken prior to the commencement of construction. These works will be undertaken in accordance with the following sections of this OCTMP as certified through the DCO:
- Section 1.4: Management of HGV movements;
 - Section 1.8: Management of construction workforce movements; and
 - Section 1.9: Site accesses and compounds.
- 1.3.1.3 Volume 1, Chapter 3: Project description of the ES sets out further details in relation to construction activities, including information on temporary construction compounds which are generally established early on in the onshore site preparation/ construction phases to facilitate construction activities.
- 1.3.1.4 The potential adverse effects resulting from the construction activities relating to traffic and transport are assessed in Volume 3, Chapter 7: Traffic and transport of the ES and comprise the following potential effects:
- On non-motorised user delay, severance, and fear and intimidation due to HGV movements.
 - Due to possible increased risk to road users as a result of the passage of construction vehicles along existing roads or at site accesses.
 - Resulting from the movement of AILs associated with the construction of the onshore substations.

1.4 Management of HGV movements

1.4.1 Vehicle types

- 1.4.1.1 A variety of heavy goods vehicle (HGV) types will need to access the construction sites. These will include, but are not limited to:
- low loaders HGVs to deliver:
 - plant;

- construction machinery;
- ducting and cables;
- fencing, welfare facilities and temporary portable cabins; and
- components for the onshore substations.
- tippers HGVs delivering aggregate for surfacing of compounds and haul roads;
- tankers to deliver/remove fluids for trenchless techniques and for welfare.

1.4.2 Vehicle routing

1.4.2.1 The indicative access routes, shown at **Appendix A**, follow the most direct suitable route for HGV movement (considering road layout, geometries and any regulatory restrictions) using a road hierarchy of using motorways, followed by A classification roads, then B classification roads and then local roads to reach the temporary construction compound accesses. These indicative access routes therefore maximise the use of higher classification roads and minimise the use of local roads.

1.4.2.2 Potential variations to this approach may be required due to sections of the onshore cable corridor where it is not possible to provide a continuous haul road due to physical features such as railway lines or water courses, and therefore limited use of the local road network is required for access. The following bullets outline these potential variations; exact routing will be subject to detailed design and will be developed by the Principal Contractors (in agreement with the relevant highway authority).

- Construction vehicles to/from access 63 located on The Hamlet have been assigned via the temporary construction compound located on Leach Lane. There is not a continuous haul road between that compound and access 63, therefore these construction vehicles may potentially travel to that compound before travelling to access 63 via Appealing Lane as shown at **Appendix B**.
- Construction vehicles to/from access 9a and 9b located on B5410 Lytham St Annes Way have been assigned via the temporary construction compound located on B5261 Queensway. There is not a continuous haul road between that compound and access 9, therefore these construction vehicles may potentially travel to that compound before travelling to access 9a and 9b via A5230 Progress Way, A583 Preston New Road, and B5410 Lytham St Annes Way as shown at **Appendix B**.
- Construction vehicles to/from accesses 14 and 17 located on Ballam Road have been assigned via the temporary construction compound located on B5261 Queensway. There is not a continuous haul road between that compound and accesses 14 or 17, therefore these construction vehicles may potentially travel to that compound

before travelling to accesses 14 or 17 via A5230 Progress Way, A583 Preston New Road, B5260 Fox Lane Ends and Ballam Road as shown at **Appendix B**. Construction vehicles to/from access 19 located on Ballam Road have been assigned via the temporary construction compounds located on Ballam Road. There is not a continuous haul road between those compounds and access 19, therefore these construction vehicles may potentially travel to one of those compounds before travelling to access 19 via Ballam Road as shown at **Appendix B**.

- Construction vehicles to/from accesses 25, 26, 27, and 28 located on B5259 Saltcotes Road have been assigned via the temporary construction compounds located on Ballam Road. There is not a continuous haul road between those compounds and accesses 25, 26, 27 or 28, therefore these construction vehicles may potentially travel to one of those compounds before travelling to accesses 25, 26, 27 or 28 via B5260 Fox Lane Ends and B5259 Moss Side Lane as shown at **Appendix B**.
- Construction vehicles to/from access 33 located on Corka Lane have been assigned via the temporary construction compound located on Bryning Lane. There is not a continuous haul road between that compound and access 33, therefore these construction vehicles may potentially travel to that compound before travelling to access 33 via B5259 Moss Side Lane and Bryning Lane as shown at **Appendix B**. Construction vehicles to/from access 48 located on A584 Preston New Road have been assigned via the temporary construction compound located on A584 Preston New Road. There is not a continuous haul road between that compound and access 48, therefore these construction vehicles may potentially travel to that compound before travelling to access 48 via A584 Preston New Road and A583 Blackpool Road as shown at **Appendix B**.
- Construction vehicles to/from access 55 located on Lodge Lane have been assigned via the temporary construction compounds located on A583 Blackpool Road and A584 Preston New Road. There is not a continuous haul road between those compounds and access 55, therefore these construction vehicles may potentially travel to one of those compounds before travelling to access 55 via A583 Blackpool Road, A584 Preston New Road and Lodge Lane as shown at **Appendix B** because it cannot be accessed via the haul road.
- Construction vehicles to/from access 56 located on A583 Blackpool Road have been assigned via the temporary construction compounds located on A583 Blackpool Road and A584 Preston New Road. There is not a continuous haul road between those compounds and access 56, therefore these construction vehicles may potentially travel to one of those compounds before travelling to access 56 via A583 Blackpool Road and A584 Preston New Road as shown at **Appendix B** because it cannot be accessed via the haul road.

- Construction vehicles to/from access 58 located on Nelson Way have been assigned via the temporary construction compounds located on A583 Blackpool Road and A584 Preston New Road. There is not a continuous haul road between those compounds and access 58, therefore these construction vehicles may potentially travel to one of those compounds before travelling to access 58 via A583 Blackpool Road, A584 Preston New Road and Nelson Way as shown at **Appendix B**.
- The accesses along the A583, A584 and A59 (accesses 01, 03, 48, 49, 50, 51, 52, 53, 56, and 62) are onto either a dual carriageway road or a four lane single carriageway road. Therefore, left in/left out access arrangements have been devised for highway safety reasons, as set out in the Outline Highways Access Management Plan (Document Reference J8).

1.4.2.3 The indicative HGV access routes and the associated access points set out above are presented at **Appendix B**.

1.4.2.4 The detailed CTMP(s) will include agreed methods of communication with the highways authorities to confirm that these routes remain appropriate and are agreed prior to commencement of construction.

1.4.2.5 The Principal Contractor(s) and any sub-contractor(s) will be required to comply with the agreed routeing plans as a part of the detailed CTMP(s) and will ensure that all drivers are informed of the need to restrict HGV movements to those specified routes. To ensure compliance with the agreed HGV delivery routes, the following measures are proposed:

- Direction signing would be implemented to direct construction traffic to the respective accesses along the assessed delivery routes (the location and design of these signs would be agreed with the relevant highway authority prior to the commencement of the relevant stage of works);
- The delivery routes and timing would be communicated (by the CTMPCo(s) through the issuing of delivery instructions to all companies and / or drivers involved in the transport of materials and plant to and from the site by HGV construction vehicles;
- The registration numbers for all HGVs making deliveries would be recorded by the CTMPCo(s). This would allow for checking and enforcement of any non-compliance of the agreed delivery routes;
- The CTMPCo(s) would require that HGVs are equipped with vehicle tracking (e.g. GPS). The proportion of the HGV fleet to be equipped with vehicle tracking would be agreed with the relevant highway authority (e.g. accounting for small local suppliers that may not have the facility). The CTMPCo(s) would also require that this data is made available to the CTMPCo(s) and relevant highway authority if requested (subject to ensuring personal data is protected). Vehicle tracking would assist the CTMPCo(s) to investigate any potential non-compliances; and
- The CTMPCo(s) would require that where HGVs are equipped with dash cameras that the footage is made available to the CTMPCo(s)

and relevant highway authority if requested. The CTMPCo would be required to ensure that personal data is protected in accordance with the provisions of the UK General Data Protection Regulation and the Data Protection Act 2018.

- The CTMPCo(s) would provide an 'identifier' that would be placed within the window of all delivery vehicles to enable residents to identify if an HGV is engaged on work on the Transmission Assets and would be submitted to and approved by the relevant highway authority as part of the detailed CTMP(s).

1.4.3 Timing of HGV movements

- 1.4.3.1 Standard construction working hours are identified in the Outline Code of Construction Practice ([document reference J1](#)). The core working hours will be 07:00 to 19:00 Monday to Friday and 07:00 to 13:00 on Saturday (CoT18).
- 1.4.3.2 There may also be up to one hour before and after for mobilisation, i.e. 06:00 to 07:00 and 19:00 to 20:00 weekdays and 06:00 to 07:00 and 13:00 to 14:00 on Saturdays. Mobilisation does not include HGV movements into and out of sites, and suppliers using light vehicles can make use of the wider highway network outside these hours to travel to or from site.
- 1.4.3.3 At all times, including mobilisation periods, no vehicles will be permitted to wait or queue on the public highway whilst seeking access to the construction sites (for clarity this prohibition would extend from supply origin to destination). No vehicles will be permitted to load/unload on the public highway and all vehicles must turn off their engines whilst stationary after turning off the public highway.
- 1.4.3.4 Any HGVs which are projected to arrive on site prior to 07:00 would be required to park at an appropriate lorry park, services and other designated overnight parking locations until they can complete their journey within the restrictions outlined above. Details of suitable locations covering all points of entry to the traffic and transport study area are provided within **Table 1.2**.
- 1.4.3.5 In addition, Lancashire County Council have requested that a 'long list' of potential locations for HGVs to wait or be held in the event of an incident within the extents of the traffic and transport study area is included within the oCTMP. A long list of locations within the proximity of main A and B roads are outlined below, comprising of existing laybys (**Table 1.3**) and proposed compounds (**Table 1.4**).
- 1.4.3.6 The final list of parking and waiting locations would be agreed with the highway authorities prior to the commencement of construction and would be communicated to drivers within their delivery instructions (outlined within Section 1.4.5). In the event that suitable waiting locations cannot be identified for discrete accesses, the CTMPCo(s) would investigate options for providing new laybys within the highway boundary and agree these with the relevant highway authorities.

- 1.4.3.7 Following commencement of construction, the CTMPCo(s) will undertake checks of the suitability and capacity of the agreed parking and waiting locations. The frequency and timing of checks would be agreed with the highway authorities prior to the commencement of construction. Should issues be identified (e.g. a layby is regularly observed to be at capacity) drivers and suppliers would be made aware of this through an update to their delivery instructions (outlined within Section 1.4.5).

Table 1.2: Potential parking locations

Location	Description	Approx. No. of spaces
M6 - Junction 31A	Shell services	20
M6 – South of Junction 33	Moto Lancaster Services	60 (30 north / 30 south)
M65 – Junction 4	Blackburn with Darwen Services	20
M61 – North of Junction 6	Rivington Services	150 + (100 north / 50 south)
M6 – North of junction 27	Welcome Break Charnock Richard Services M6	70 (35 north / 35 south)
M58 – Junction 5	Skelmersdale Truckstop	30

Table 1.3: Potential existing waiting locations

Location	Description	Latitude	Longitude
A5320	A layby on the northern side of the A5320 west of the M55 junction. The layby is able to accommodate approximately five HGVs.	53.79409816	-2.99437618
A583 Blackpool Road	A layby on the northern side of the A583 east of the B5260 toward Wrea Green. The layby is able to accommodate approximately two HGVs.	53.78602074	-2.91064741
Freckleton Road	A layby on the eastern side of Freckleton Road south of the A583. The layby is able to accommodate approximately two HGVs.	53.7772813	-2.86989389
A583 Kirkham Bypass	A layby on the northern side of the A583 south of Kirkham. The layby is able to accommodate approximately five HGVs.	53.77827641	-2.86306559
A584 Preston New Road	A layby on the southern side of the A584 east of Freckleton. The layby is able to accommodate approximately three HGVs.	53.75807099	-2.85040659
A584 Preston New Road	A layby on the northern side of the A584 east of Freckleton. The layby is able to accommodate approximately two HGVs.	53.75832044	-2.84744796
A584 Preston New Road	A layby on the southern side of the A584. The layby is able to accommodate approximately two HGVs.	53.75836071	-2.83524241

Location	Description	Latitude	Longitude
A584 Preston New Road	A layby on the northern side of the A584 to the west of Lytham Road. The layby is able to accommodate approximately two HGVs.	53.75889573	-2.81292204
A584 Preston New Road	A layby on the southern side of the A584 to the west of Lytham Road. The layby is able to accommodate approximately two HGVs.	53.75868858	-2.81204099
A59 Longton Bypass	A layby on the eastern side of the A59 south of Hutton. The layby is able to accommodate approximately two HGVs.	53.7279263	-2.7611304
A59 Longton Bypass	A layby on the western side of the A59 south of Hutton. The layby is able to accommodate approximately two HGVs.	53.71864244	-2.77021674

Table 1.4: Potential compound waiting locations

Location	Description
B5261 Queensway	Proposed temporary construction compounds served from new accesses 7 and 8 (shown in Appendix B) from the B5261.
A583 Blackpool Road	Proposed temporary construction compounds served from new accesses 01, 50, 52 and 53 (shown in Appendix B) from the A583.
A584 Preston New Road	Proposed temporary construction compounds served from new accesses 03, 48, 49 and 51 (shown in Appendix B) from the A584.
A59 Liverpool Road	A proposed temporary construction compounds served from new access 62 (shown in Appendix B) from the A59.

- 1.4.3.8 In certain circumstances, specific works may have to be undertaken on a continuous working basis (00:00 to 00:00 Monday to Sunday). Requirement 14 of the draft Development Consent Order (DCO) (document reference C1) Schedules 2A & 2B, secures the types of works that are permitted outside of the standard hours as well as the requirements in terms of notification and approval.
- 1.4.3.9 Where works are required on a continuous basis the CTMPCo(s) will seek to schedule deliveries between 07:00 and 19:00 e.g. stockpiling materials where possible and practicable.
- 1.4.3.10 Consideration will be giving to the timing of HGV movements through locations with sensitive receptors, for example where HGV movements may pass through road links with schools, during school opening and closing times.
- 1.4.3.11 The Applicants have committed to HGV movements through Wrea Green being scheduled to occur outside of school drop-off and pick-up (including waiting) times, noting the Ribby with Wrea Endowed Church of England School is located adjacent to the B5260. The CTMPCo(s) would agree the exact periods to be avoided with ~~Lancashire County Council~~ [the M&MHSO](#) as part of finalising the detailed CTMP(s).

1.4.4 Reducing the impact of HGV Numbers

- 1.4.4.1 To ensure compliance with the assessed maximum design scenario for HGV trips presented within Table 7.21 of Volume 3, Chapter 7: Traffic and transport of the ES (APP-108), a booking system for deliveries would be established by the CTMPCo(s) to monitor HGVs at supply chain source and point of delivery.
- 1.4.4.2 The booking system would enable a daily profile of deliveries to be maintained, allow the CTMPCo(s) to ensure that the required deliveries are forecast and planned and would also serve to inform route compliance.
- 1.4.4.3 Should Project A and Project B be constructed concurrently to ensure compliance with the assessed maximum design scenario for HGV trips (detailed within Table 7.21 of the ES) the CTMPCo(s) for both Project A and Project B will be required to liaise to coordinate their potential forward programme for deliveries to ensure compliance.
- 1.4.4.4 To provide the highway authorities with an indication of when peak deliveries may occur, the detailed CTMP(s) will include the indicative profiles for monthly deliveries for the construction duration.
- 1.4.4.5 Load sizes are typically maximised and thus vehicle usage is typically minimised by contractors in order to minimise transportation costs and this will be encouraged by the CTMPCo(s).
- 1.4.4.6 Site supervisors will be encouraged to re-use HGVs where possible, such as using vehicles which have delivered material to remove excavated material if this needs to be removed from a site. Where practical, local suppliers will be used to minimise the distance travelled by HGVs.

1.4.5 Driver inductions

- 1.4.5.1 All regular HGV drivers for the Transmission Assets would be formally inducted. The induction would establish a clear set of responsibilities that all drivers would be required to follow, such as:
- Timings, pre-booked slots;
 - Clarification of approved HGV routes;
 - Highway safety concerns;
 - Parking, waiting and loading restrictions;
 - Safe driving techniques along the haul road;
 - Safe driving techniques when passing along narrow roads;
 - Adherence to speed limits; and
 - Details of reporting accidents and ‘near misses’.
- 1.4.5.2 To support the induction process, all drivers would also be issued with a delivery pack. This pack would include the following information:

- A plan showing the delivery routes, the location of the site access and areas with road safety concerns and areas with constrained width;
- Details of appropriate lorry parks, services and other designated overnight parking locations where drivers are permitted to stop;
- A copy of the identifier to display in the vehicle window (set out in Section 1.4.2);
- Details of restrictions on delivery hours (set out in Section 1.4.3); and
- Details of disciplinary measures for non-compliance (set out in Section 1.15.6).

1.5 Control of material on the highway

1.5.1.1 To prevent detritus and other material being deposited on the public highway, the CTMPCo(s) would be required to implement a series of site-specific measures. Prior to the commencement of the relevant stage of works, details of the measures that would be used for each access and crossing would be submitted to and agreed with the relevant highway authority ([inc. the M&MHSO for Lancashire County Council](#)) as part of the detailed CTMP(s).

1.5.1.2 It is envisaged that as a minimum, measures would include the following:

- All HGVs transporting fine and loose material will be sheeted to avoid dust and the spillage of materials onto the highway.
- Dampening of surfaces, such as the haul road in locations where it is close to the public highway, will be undertaken in dry weather where the movement of vehicles or delivery of loads may cause immoderate dust.
- Accesses and crossings would be provided with a bound surface (asphalt / concrete) to prevent mud and dirt being tracked onto the highway.
- Regular inspections of the public highway in the vicinity of the active site accesses to ensure cleanliness.
- Road sweepers on call to clear any detritus and other material from the public highway.

1.5.1.3 Where there is a greater risk of detritus from the construction works being transported onto the highway network by HGVs i.e. where deliveries may be more intense, e.g. at each of the onshore substations, wheel cleaning facilities will be provided at the access/egress location to ensure that HGVs do not deposit detritus onto the highway network. Further information on dust management is provided in the Outline Dust Management Plan (APP-195).

1.5.1.4 Accesses A1 and A2 are located adjacent to the beach and as such there is a greater risk at these locations of sand being transported on to

the highway. In these locations, when the access is in use, the CTMPCo(s) will ensure that the access (and surrounding highway) is regularly inspected and any sand is cleared. At these locations, the CTMPCo(s) will ensure that a brush is available on site, and road sweeper is available on call.

1.5.1.5 Prior to the commencement of the relevant stage of works, the CTMPCo(s) would agree with the highway authorities ([inc. the M&MHSO for Lancashire County Council](#)) an appropriate response time to remove any reported detritus / material on the highway following a report.

1.5.1.6 Prior to the commencement of the relevant stage of works the CTMPCo(s) will also be required to provide the relevant highway authority ([inc. the M&MHSO for Lancashire County Council](#)) with their contact details to provide a direct line of communication to report/discuss any issues.

1.6 Management of abnormal indivisible loads

1.6.1.1 It is expected that a number of abnormal indivisible loads (AILs) comprising large components such as transformers will be transported to the onshore substations.

1.6.1.2 In addition, smaller AILs will also need access for items such as cable drum deliveries to the access points along the onshore export cable corridors and 400 kV grid connection cable corridors.

1.6.1.3 Cable drums are expected to be delivered to temporary construction compounds or to the relevant access points along the onshore export cable corridor and 400 kV grid connection cable corridor via specialised cable drum trailer for installation. Where cable drums are delivered to temporary construction compounds, subsequent redistribution across the onshore export cable corridor and 400 kV grid connection cable corridor may then be required. For assessment purposes, all cable drum movements have been considered as AILs. The AILs are expected to be components that exceed standard load weight and possibly exceed standard width and length.

1.6.1.4 Although the movement of cable drums have been classified as AILs, this is dependent upon the cable drum size, weight and their transportation arrangements and their movement may not in fact be an AIL. All cable drum deliveries are expected to travel to the onshore export cable corridor and 400 kV grid connection cable corridor from the M55. The number of AIL movements are expected be low.

1.6.1.5 The approval for the movement of AILs is administered by National Highways on behalf of the Secretary of State for Transport, through the ESDAL portal (Electronic Delivery Service for Abnormal Loads).

1.6.1.6 The ESDAL system requires hauliers to apply, (within prescribed time periods depending on the width, length or weight of the laden vehicle provided) to the highway authorities, bridge authorities and the police.

1.6.1.7 To reduce the risk of any delay to approval, prior to the submission of the formal ESDAL notification, the CTMPCo(s) will initially consult with

local police authority, relevant highway authority ([inc. the M&MHSO for Lancashire County Council](#)) and Network Rail and agree appropriate timings, routes (taking into consideration structures) and asset protection measures appropriate to the type of load.

- 1.6.1.8 Each transformer delivery would be classified as a Special Order¹ AIL delivery due to the size of the vehicle. The movement of Special Order AILs would be outside the restrictions (routes and times) contained within this OCTMP and would be subject to a separate agreement with the relevant highway authority and police through the ESDAL system.
- 1.6.1.9 The movement of the non-Special Order AILs (such as cable drums) would be subject to the same delivery route restrictions as HGVs (outlined in Section 1.4.2); however, the timing of movements may be outside the standard hours (outlined in Section 1.4.3) and subject to separate agreement with the relevant highway authority and police through the ESDAL system.
- 1.6.1.10 Each AIL load would be present on the network for a short period of time and standard measures (including traffic management measures) would be applied in accordance with the processes outlined above and the heavy haulage company's insurance requirements in terms of route, timing, and method of delivering to minimise delays to other highway users. If and where relevant, this may include prior notification given to the police who will notify the locality via local newspapers/radio etc so that other users have advance notification.
- 1.6.1.11 Some AILs may require escorting by the police or private suitably trained and qualified operatives. The need for, and form of any escort will be agreed with the local police authority and in consultation with the relevant highways authorities, prior to the movements taking place.
- 1.6.1.12 Where escorts are required, they would control the AILs as well as interacting with other road users to control, guide and protect them accordingly so as to safeguard their safe and expedient passage. This includes not just other vehicles but also non-motorised users and those who simply wish to watch/observe the movement of the AILs transporting the larger transformers from the roadside.
- 1.6.1.13 The timing of AIL deliveries will be discussed and agreed with the relevant highways authority to minimise delay for other road users and to minimise risk to highway users.

1.7 Management of incidents

- 1.7.1.1 To reduce the potential for construction traffic to have an adverse effect upon the highway network during planned and unplanned events, the measures set out in **Table 1.5** would be adopted.

¹ The Road Vehicles (Authorisation of Special Types) (General) Order 2003 (SI 1998) limits gross weight of an AIL to 150 tonnes, axle weight to 16,500kg, length to 30m and/or width to 6.1m, above which a Special Order is required from National Highways.

Table 1.5: Traffic incident management measures to be adopted during events

Measure	Rationale
Managing traffic demand during major events that impact on the highway (e.g. bike races, Blackpool Illuminations, school events).	The CTMPCo(s) would liaise with local stakeholders (including but not limited to the Fylde Council, Blackpool Council, M&MHSO for Lancashire County Council and National Highways) to understand when major events occur. To ensure there are limited HGV trips planned along affected links during planned major events, the CTMPCo(s) would undertake advanced planning to schedule activities and stockpile of materials in advance.
Managing traffic demand during major incidents such as accidents on the highway.	The CTMPCo(s) would monitor traffic conditions. Should the CTMPCo(s) become aware of an incident then the CTMPCo(s) would liaise directly with suppliers to suspend HGV deliveries along affected routes where required.
Managing traffic demand during road closures.	<p>In the event that the CTMPCo(s) becomes aware that the agreed delivery routes (Appendix A and B) are unavailable (e.g. due to road closures by others) the CTMPCo(s) would initially seek to reschedule works utilising the affected links. Where this is not possible (e.g. in the case of long term closures which would disrupt the construction programme) the following approach is proposed:</p> <ul style="list-style-type: none">• The CTMPCo(s) would identify contingency diversion routes having regard for the road hierarchy (e.g. where practicable utilising A and B roads);• The CTMPCo(s) would submit details of the proposed contingency diversion routes to the relevant highway authorities who would be requested to advise if they consider the routes are suitable.
Incidents involving the Contractor(s) HGV traffic blocking the highway, such as, breakdowns, accidents, etc.	The Contractor(s) and their suppliers' fleet would have arrangements with recovery companies to allow breakdowns and accidents to be cleared as quickly as possible.

1.8 Management of construction workforce movements

1.8.1 Construction workforce travel

1.8.1.1 The value in managing and reducing the impact of the movement of construction staff is recognised. The following section outlines a range of industry good practice 'Travel Plan' measures that would be adopted to reduce the number of single occupancy vehicle trips.

1.8.1.2 The detailed CTMPs will document final measures to be implemented to encourage contractors to make use of sustainable transport modes where possible and where appropriate. These measures would be implemented from commencement of construction to ensure good practice travel plan measures are embedded from the start of construction:

- Measures to increase vehicles occupancy such as incentives to car-share, information to facilitate car sharing and the provision of minibuses where this would allow construction workers to access sites without the need to come by car.

- The provision of public transport information to assist construction workers traveling by bus or train to locations where they could be picked up by minibus.
- Measures to encourage walking and cycling including provision of changing facilities and temporary cycle parking at work sites.
- Welfare facilities will be provided on work sites to reduce the need for construction workers to travel elsewhere during the course of the day.
- All drivers would be required to park all staff LGV and HGVs within designated areas (site compounds). Drivers not parking within the designated areas, would be subject to enforcement action as set out in Section 1.15.6.

1.8.2 Timing of LV movements

- 1.8.2.1 The OCoCP (~~APP-193~~[document reference J1](#)) outlines that construction work for the onshore works must only take place between 07:00 hours and 19:00 hours Monday to Friday and 07:00 to 13:00 on Saturday, with no activity on Sundays and bank holidays.
- 1.8.2.2 The proposed working hours (outlined above) seeks to avoid construction workers travelling during the highway network peak hours and this reduces impacts on the local road network during network peak hours.
- 1.8.2.3 The CTMPCo(s) will therefore require staff to arrive prior to the morning peak hour and depart before or after in the evening peak². Section 1.15.4 includes details of how employee arrival and departure times would be monitored to ensure compliance.
- 1.8.2.4 Alternatively, it could be possible that once appointed, the Contractor(s) could require that a proportion of employees could travel during the network peak hours. In this case the numbers of vehicle movements would be shared with the highway authorities to understand if the numbers would be acceptable in the peak hours or if capacity assessments would be required.
- 1.8.2.5 In the event that capacity assessments are requested, the scope of these traffic surveys, modelling software and any future growth forecasts would first be agreed with the relevant highway authority.
- 1.8.2.6 Should the capacity assessments identify potentially significant effects, mitigation measures would be agreed with the relevant highway authority to manage effects to a level that is not significant. Any mitigation measures would focus upon 'demand management' measures to reduce peak traffic movements, such as, a higher car-sharing ratio, etc.

² The network peak hours are identified to be 07:30 -08:30 (AM) and 16:30 – 17:30 (PM) ref. F3.7 Volume 3, Chapter 7: Traffic and Transport, Table 7.24.

1.9 Site accesses and Compounds

1.9.1 Design

- 1.9.1.1 Access locations are identified in the Outline Highway Access Management Plan (document reference J8). The detailed design of all accesses and crossings will be agreed with the relevant highways authority ([inc. the M&MHSO for Lancashire County Council](#)) as part of developing the detailed Highway Access Management Plan(s). The use of existing accesses for onshore site preparation works would be subject to agreement with the relevant highway authorities: [\(inc. the M&MHSO for Lancashire County Council\)](#).
- 1.9.1.2 Once a construction site access is no longer required, measures would be introduced to prevent unauthorised use and the access will be removed and the area reinstated as soon as practicable and in any event no longer than 12 months following the completion of the relevant stage of onshore works unless otherwise agreed with the highway authority ([inc. the M&MHSO for Lancashire County Council](#)) in consultation with the relevant planning authority/authorities.).
- 1.9.1.3 Working areas will be designed to enable plant, materials and waste to be loaded/unloaded, areas will be designed to enable vehicles to enter and exit in forward gear. Contractors/suppliers will not be permitted to wait on or load/unload from the public highway unless under traffic management control during the formation of accesses.
- 1.9.1.4 To avoid the risk of vehicles needing to wait/park on the highway, the CTMPCo(s) will ensure that a member of staff (typically security personnel) arrives prior to other employees/deliveries to ensure that accesses are ready to receive traffic (e.g. gates are open/manned).
- 1.9.1.5 Areas where construction staff are working will be designed to enable designated parking facilities for construction workers. The LV measures outlined in section 1.8.1 will assist the CTMPCo(s) in ensuring that demand for employee parking is managed to avoid employees parking on the highway whilst also seeking to minimise vehicle trips.
- 1.9.1.6 The provision of adequate parking capacity within the construction sites will avoid the requirement for employees to park on verges or highways and also avoid the need for drivers to wait for access.
- 1.9.1.7 Car sharing syndicates will be planned to ensure there are suitable 'satellite' parking facilities (e.g. hotels or guest houses) or the designated driver picks up door to door.
- 1.9.1.8 All site accesses will be provided with appropriate fencing. All site accesses will be designed to eliminate the risk of vehicles queueing back onto the highway by providing sufficient length and width close to the adjacent highway, which is appropriate to the types of vehicles anticipated to use the access.
- 1.9.1.9 Contact numbers will be on display for the general public to communicate with the CTMPCo(s) in relation to the highways matters.

1.10 Last Leg Mitigation Measures

- 1.10.1.1 The Applicants, in discussion with Lancashire County Council, have identified 12 'last leg' links within the traffic and transport study area where carriageway width requires mitigation and management measures to manage the safe passage of HGVs.
- 1.10.1.2 Link specific management and mitigation measures have been agreed with Lancashire County Council and are described in **Table 1.6**. **Appendix C** provides a graphical overview of the location of the last leg mitigation measures, e.g. road widening and passing places (excluding associated detail of lining and signing interventions due to scale). Details of the process for full technical approval is set out at paragraph 1.10.1.5.
- 1.10.1.3 The link specific measures would be augmented by the monitoring and mitigation measures set out in Section 1.13.2 and the highway condition measures set out in Section 1.13.3.
- 1.10.1.4 In addition to the link specific management and mitigation measures, the following management measures would be adopted for all last leg links and be communicated to drivers through delivery instructions and inductions:
- Advise drivers of the potential for conflict through delivery instructions and inductions.
 - Advise drivers to slow when passing an oncoming HGV and be prepared to stop.
 - Advise to drivers to slow when passing non-motorised users and be prepared to stop.

Table 1.6: Link specific mitigation measures

Link	Link description	Proposed measures
Link 22b	Blackpool Road North	<p>Inappropriate on street parking along Link 22 is noted as a potential constraint to the passage of HGVs. The following measures are therefore proposed:</p> <ul style="list-style-type: none"> Parking along Link 22b will be monitored by the CTMPCo. Should issues be identified the CTMPCo will implement the parking strategy (outlined in Section 1.11).
Link 53	Kirkham Road	<p>Reduced highway width to the south of Link 53 (beyond Lower Lane) is noted as a potential constraint to the passage of two HGVs and two areas have been identified where there would be the potential for the oversail of HGV wingmirrors beyond the edge of the carriageway. A section is provided with kerbs either side and footway to one side and a low hedge to the other. HGV wing mirrors should therefore be able to oversail these areas. The southern section is not provided with a kerb to one side and Lancashire County Council have noted the potential for verge creep to reduce the effective highway width. The following measures are therefore proposed for HGVs travelling along Link 53:</p> <ul style="list-style-type: none"> Within the vicinity of the junction with Hillock Lane, where no kerb is provided along the eastern side of the road, the verge will be re-profiled to maintain the width of the highway and will be maintained throughout the use of the link to avoid 'verge creep'.
Link 70	Wallend Road (Public highway section)	<p>Inappropriate on street parking along the public highway section of Link 70 is noted as a potential constraint to the passage of HGVs. The following measures are therefore proposed:</p> <ul style="list-style-type: none"> Parking along Link 70 will be monitored by the CTMPCo. Should issues be identified the CTMPCo will implement the parking strategy (outlined in Section 1.11).
	Wallend Road (Private highway section)	<p>Reduced highway width along the private section of Link 70 is noted as a potential constraint to the passage of HGVs past non-motorised users. The following measures are therefore proposed:</p> <ul style="list-style-type: none"> An additional passing place will be installed approximately midway along the link between the access and the existing passing place. The design of the new passing place will have regard to ensuring the continuity of the existing non-motorised user route along this link. Signage will be installed to highlight the existing and new passing places.
Link 101	Howick Cross	<p>Reduced highway width along Link 101 is noted as a potential constraint to the passage of two HGVs. The following measures are therefore proposed:</p> <ul style="list-style-type: none"> The existing passing places along Link 101 will be made wider/longer and localised narrow widening will be provided within the extents of the existing public highway.

Link	Link description	Proposed measures
		<ul style="list-style-type: none"> Measures such as road markings and carriageway surfacing will be installed to highlight the passing places and areas where the road accommodates passing of HGVs. This strategy will also be supported by appropriate signage. HGVs traveling via Link 101 to accesses 59, 60 and 61 will first be required to travel to access 62 off the main A59. The CTMPCo will ensure that HGVs are managed such that only one vehicle is allowed to travel to access 59, 60 and 61 at a time (one in and one out), thus removing conflict between the Transmission Assets HGVs. The CTMPCo would cap the number of additional HGVs along Link 101 at no more than 22 two-way HGV movements per day (i.e. 11 arrivals and 11 departures). This equates to approximately one arrival and one departure every hour. This level of HGV traffic would allow time for drivers to traverse Howick Cross Lane, unload/be loaded and return back along Howick Cross Lane. Should any future cumulative developments also require HGV movements along Link 101 (e.g. future works by National Grid) these would be required to be discussed with Lancashire County Council and the CTMPCo via the Transport Working Group (TWG) (described in Section 1.14) to understand if they can be accommodated within the daily cap. Should flows be forecast to be in excess of the cap, Lancashire County Council have advised that they would seek road widening from the promoters of future projects. The CTMPCo will request the CLO to engage with existing users of Link 101 to understand if there are more intense periods (e.g. harvest times for farmers) that should be avoided.
Link 102	The Hamlet/ Appealing Lane	<p>Inappropriate on street parking and reduced highway width along Link 22 is noted as a potential constraint to the passage of HGVs. The following measures are therefore proposed:</p> <ul style="list-style-type: none"> HGVs traveling via Link 102 to access A63 will first be required to travel to access A6. The CTMPCo ensure that HGVs are managed such that only one vehicle is allowed to travel to access A63 at a time (one in and one out), thus removing conflict between the Transmission Assets HGVs. To manage the potential for any residual conflict between background HGVs and the Transmission Assets HGVs along Link 102 at an identified pinch point, road narrows signs will be installed either side of the pinch point, highlighting the narrowing and areas where vehicles can wait. Parking along Link 102 will be monitored by the CTMPCo. Should issues be identified the CTMPCo will implement the parking strategy (outlined in Section 1.11).
31a & 41	Ballam Road	<p>Reduced highway width along Link 31a and 41 is noted as a potential constraint to the passage of HGVs. The following measures are therefore proposed:</p> <ul style="list-style-type: none"> Passing places and narrow road widening will be provided along Ballam Road within the extents of the public highway. Measures such as road markings and carriageway surfacing will be installed to highlight the passing places and areas where the road accommodates passing of HGVs. This strategy will also be supported by appropriate signage. Where

Link	Link description	Proposed measures
		<p>widening could impact upon driveways, measures such as lining and signing will be provided to maintain the visibility splays.</p> <ul style="list-style-type: none"> • Consideration to the use to solid white lines through bends to enforce lane discipline. • Provision of signage and road markings on the approach to the two bridges to highlight the pinch point. • Where HGVs are not able to pass the centre line markings will be removed to assist drivers in understanding areas of potential conflict. • Where hedges could restrict intervisibility between passing areas, or reduce the effective road width, the CTMPCo(s) will engage the highway authority and or landowner to ensure regular maintenance. • All drivers would be advised to travel at no more than 30mph along Ballam Road through delivery instructions and inductions.
43b	Station Road	<p>Reduced highway width along Link 43b is noted as a potential constraint to the passage of HGVs. The following measures are therefore proposed:</p> <ul style="list-style-type: none"> • Localised provision of kerbing and narrow road widening will be provided within the extents of the public highway.
46	Bryning Lane	<p>Reduced highway width along Link 46 is noted as a potential constraint to the passage of HGVs. The following measures are therefore proposed:</p> <ul style="list-style-type: none"> • Localised narrow road widening will be provided along Bryning Lane within the extents of the public highway. • Minor junction realignment, widening at the junction of Bryning Lane and Bryning Hall Lane. • Where hedges could restrict intervisibility between vehicles or reduce the effective road width, the CTMPCo(s) will engage the highway authority and or landowner to ensure regular maintenance.
39a and 39c	Moss Side Lane to Corka Lane	<p>Reduced highway width along Link 39a and 39c is noted as a potential constraint to the passage of two HGVs and for vehicles to pass non-motorised users along Link 39c. The following measures are therefore proposed:</p> <ul style="list-style-type: none"> • HGVs traveling to access 33 will first be required to travel via the temporary construction compounds located on the A584 Preston New Road. The CTMPCo will ensure that HGVs are escorted by an escort vehicle. The escort vehicle will proceed ahead of the HGV to manage the movement of the HGV along the links. • At Wrea Green an effective one-way system for the Transmission Assets will be created to manage conflict at the mini-roundabout and along inbound HGVs will turn right from Station Road on to the B5259 at the mini roundabout. Returning HGVs will instead proceed along The Green before left turning at the priority junction to then travel north through the mini roundabout onto Station Road.

Link	Link description	Proposed measures
		<ul style="list-style-type: none"> • Lancashire County Council will use best endeavours to negotiate with the Parish Council to secure additional highway land to the north-eastern corner of the mini-roundabout to allow future widening should overrun become evident. • Passing places and narrow road widening will be provided along Link 39a within the extents of the public highway. • Passing places will be provide along Link 39c within the extents of the public highway and the junction of Corka Lane and Moss Side Lane will be widened to allow two HGVs to pass. An optional passing place would be considered along Corka Lane if deemed necessary. • Measures such as road markings and carriageway surfacing will be installed to highlight the passing places and areas where the road accommodates passing of HGVs. This strategy will also be supported by appropriate signage. • The CTMPCo will request the CLO to engage with existing users of Link 39c to understand if there are more intense periods (e.g. harvest times for farmers) that should be avoided. • Where hedges could restrict intervisibility between passing areas, at junctions, or reduce the effective road width, the CTMPCo(s) will engage the highway authority and or landowner to ensure regular maintenance.
39a and 39b	Moss Side Lane to Saltcoates Road	<p>Reduced highway width along Link 39a and 39b is noted as a potential constraint to the passage of two. The following measures are therefore proposed:</p> <ul style="list-style-type: none"> • HGVs traveling to access 25, 26, 27 and 28 will first be required to travel via the temporary construction compounds located on the A584 Preston New Road. The CTMPCo will ensure that HGVs are escorted to the accesses along Link 39b by an escort vehicle. The escort vehicle will proceed ahead of the HGV to manage the movement of the HGV along the links. • At Wrea Green an effective one-way system for the Transmission Assets will be created to manage conflict at the mini-roundabout and along inbound HGVs will turn right from Station Road on to the B5259 at the mini roundabout. Returning HGVs will instead proceed along The Green before left turning at the priority junction to then travel north through the mini roundabout onto Station Road. • Lancashire County Council will use best endeavours to negotiate with the Parish Council to secure additional highway land to the north-eastern corner of the mini-roundabout to allow future widening should overrun become evident. • Passing places and narrow road widening will be provided along 39a and 39b within the extents of the public highway. • Measures such as road markings and carriageway surfacing will be installed to highlight the passing places and areas where the road accommodates passing of HGVs. This strategy will also be supported by appropriate signage. • The CTMPCo will review the timetable for the railway crossing at Moss Side and schedule deliveries to avoid periods where the crossing may typically be down.

-
- 1.10.1.5 Prior to the commencement of construction of the relevant phase, the CTMPCo(s) would formalise and agree the final detailed design of the measures outlined in **Table 1.6** and **Appendix C** with [the M&MHSO for Lancashire County Council](#) as part of the detailed CTMP(s). The detailed design of measures would need to be informed by a topographical survey of the routes.
- 1.10.1.6 The following principles will be applied to the detailed design of highway mitigation:
- Measures to highlight the presence of passing areas to drivers from a distance, such as lining, signing and road surfacing will be provided.
 - Where passing places/narrow widening is proposed, the works should be confined to a single side of the road where possible to avoid disruption.
 - Where passing places/narrow widening is proposed, the works should seek to avoid displacing existing gullies where possible.
 - Where passing places/narrow widening is proposed on a minor embankment the edge of the carriageway will be widened as far as possible (within the public highway) and retained by the provision of full upstand kerbs.
 - Where narrow widening is proposed in the vicinity of driveways road markings (such as hatching) be implemented maintain the current visibility splays.
- 1.10.1.7 Should the CTMPCo(s) identify the opportunity/requirement for amendments to the measures outlined in **Table 1.6** (e.g. changes in the highway baseline or contractor innovation) these alternatives would be proposed and agreed with [the M&MHSO on behalf of Lancashire County Council](#) to seek their agreement in principle, prior to seeking approval for detailed proposals. [There may be a requirement for further mitigation, in addition to that currently identified.](#)
- 1.10.1.8 Where road / junction widening, new / improved passing places or signage is proposed, they would be contained within the public highway and the technical approvals for the designs would be submitted to and agreed with [the M&MHSO on behalf of Lancashire County Council](#) under Section 62 and Section 278 of the Highways Act 1980.
- 1.10.1.9 The technical approval process would include submission of finalised drawings, showing full details of the improvements, including drainage, lighting, signing, and standard construction details.
- 1.10.1.10 The technical approval documentation would also include a Stage 1 and 2 Road Safety Audit and a Road Safety Audit Response Report (on behalf of the designers).
- 1.10.1.11 All road / junction widening would be temporary and following completion of construction would be reinstated to their former state unless otherwise agreed with [the M&MHSO on behalf of Lancashire County Council](#).

-
- 1.10.1.12 Street works will be in accordance with the provisions of the DCO and applications for road space booking would be made via Street Manager.
- 1.10.1.13 Upon commencement of the use of the links outlined in **Table 1.6** the effectiveness of the measures would be monitored and reviewed by the CTMPCo(s), taking on board any feedback from [the M&MHSO on behalf of](#) Lancashire County Council and the CLO. Should the CTMPCo(s) and [the M&MHSO on behalf of](#) Lancashire County Council consider amendments are required the CTMPCo would discuss options and progress changes. Any changes would need to be agreed and approved by [the M&MHSO on behalf of](#) Lancashire County Council prior to implementation.

1.11 Parking Management Measures

- 1.11.1.1 Existing on street parking is noted by Lancashire County Council on a number of HGV delivery routes, notably Links 22b, 72 and 102. It has been agreed with Lancashire County Council based on existing parking that it would not be appropriate in the first instance to progress formal parking restriction on these routes prior to the commencement of construction. However, following commencement of construction should parking be identified to present a constraint along these routes (or others) the following strategy would be adopted.
- 1.11.1.2 The CTMPCo(s) would initially place notices on vehicles advising of the issues experienced and reminding drivers to park considerately. Should this strategy fail to achieve the desired outcome, the CTMPCo(s) would liaise with Lancashire police to place no waiting cones on street and/or issue warning notices to offending drivers and engage with [the M&MHSO on behalf of](#) Lancashire County Council. Conversations would also commence with [the M&MHSO on behalf of](#) Lancashire County Council upon the appropriateness of providing Temporary Traffic Regulation Orders (TTROs). All costs associated with the TTROs will be met by the Applicants.

1.12 Highway crossings

1.12.1 Onshore export cable corridor and 400 kV grid connection cable corridor highway crossing locations and operation

- 1.12.1.1 All crossings of the public highway (except for Leach Lane) will be undertaken using Horizontal Directional Drilling (HDD) or other trenchless technologies, including direct pipe or micro-tunnel. Proposed crossing methodologies for roads are set out within the Volume 1, Annex 3.2: Onshore crossing schedule of the ES.
- 1.12.1.2 Trenchless methods for cable installation means that there is no disturbance (i.e. no shuttle working nor road closures) to other users of the road with the exception of material delivery and arrival/departure of construction staff.

- 1.12.1.3 To minimise delays to road users along Leach Lane, it is proposed that traffic will be managed through the lane closure via the use of signalled shuttle working arrangements as shown on **Diagram 1.1**. Street works will be in accordance with the provisions of the DCO and applications for road space booking would be made via Street Manager.

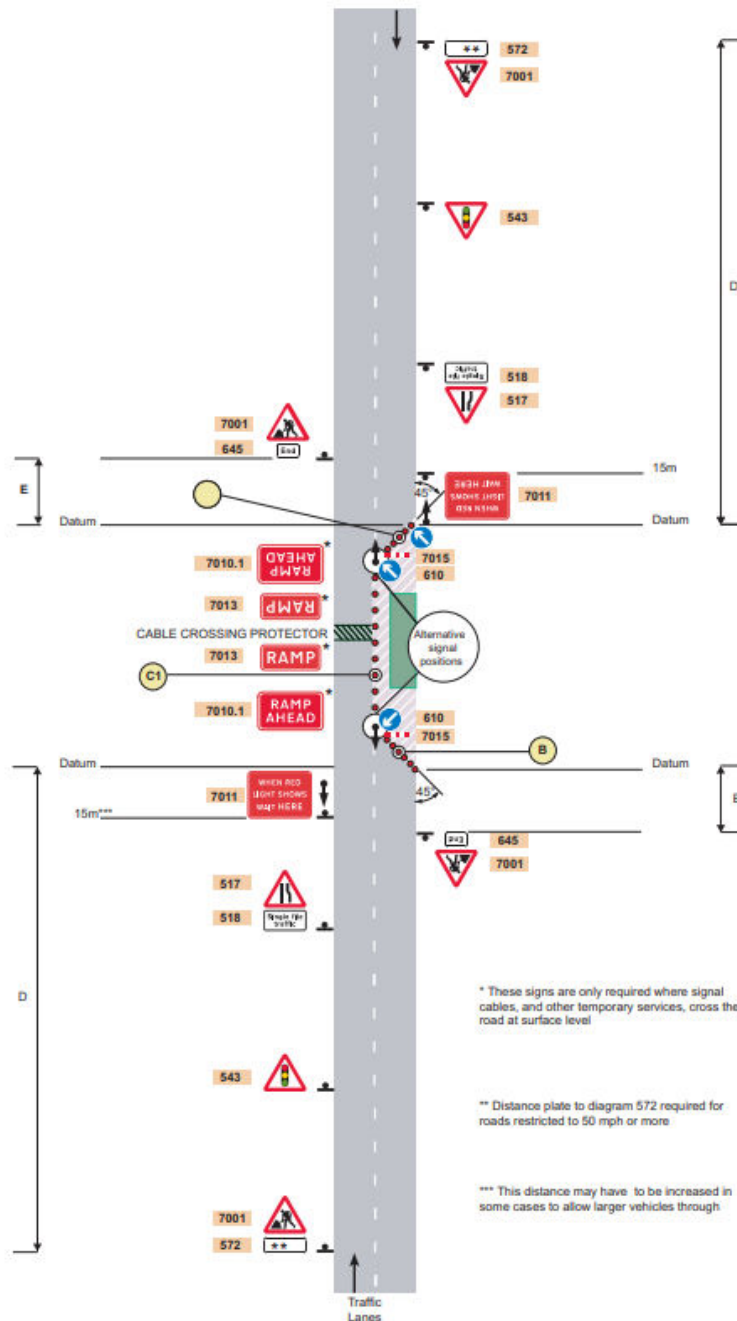


Diagram 1.1: Portable traffic signals on a two-lane single carriageway road

1.12.2 Agreement, management, and advance notification

- 1.12.2.1 Where traffic management measures are required, these will be agreed in advance with the relevant highways authorities.
- 1.12.2.2 Any temporary road closures/introduction of one-way roads and any diversions will be advertised in advance and alternative routes indicated through signage.
- 1.12.2.3 Measures will be put in place to discourage unauthorised access to the onshore export cable corridor and 400 kV grid connection cable corridor from the highway at crossing points and that the adjacent works sites are secure.
- 1.12.2.4 Any works within the highway will be reinstated to a standard commensurate prior to the commencement of the works and agreed with the relevant highways authority.

1.12.3 Haul road and its crossings with the highway

- 1.12.3.1 A haul road will be constructed along the majority of the onshore export cable corridor and 400 kV grid connection cable corridor to provide for the HGV access for construction, with gaps (or 'lock-outs') only occurring at some trenchless technique crossing locations and road crossings. The haul road will enable vehicles to move along the onshore export cable corridor and 400 kV grid connection cable corridor and relieve the need for construction traffic to rely on longer sections of the local road network during construction. Vehicle movements should be via the construction haul road, where practicable, to minimise adverse impacts on the local road network.
- 1.12.3.2 The haul road would operate with a low-speed limit (10mph) to ensure the safety of the workforce and plant operatives in the vicinity. Where the haul road crosses existing highway links, traffic management would be used to ensure that safe crossing by highway traffic and haul road vehicles.
- 1.12.3.3 Crossing locations are identified in the Outline Highway Access Management Plan (AS-052). The detailed design of all crossings will be agreed with the relevant highway authority ([inc. the M&MHSD on behalf of Lancashire County Council](#)) as part of developing the detailed Highway Access Management Plan(s).

1.12.4 Public rights of way

- 1.12.4.1 Several Public Rights of Way (PRoW) and areas of land with informal public access will potentially be affected by the construction of the Transmission Assets. Prior to any temporary stopping up or localised diversion of the PRoW, measures will be agreed in accordance with those established in the Outline Public Rights of Way Management Plan (document reference J1.5) to manage the interface between the works and PRoW with the relevant PRoW officers.

1.12.5 Preston Guild Wheel cycle route

- 1.12.5.1 The Applicants have identified that access to the section of 400 kV grid connection cable corridor between the A583 and River Ribble from access 57 would require construction traffic to interface with users of the Preston Guild Wheel cycle route on the A583 overbridge.
- 1.12.5.2 To address this potential conflict, the Applicants have agreed to remove this access and alternatively require all construction traffic to use access 58 (shown on **Appendix B**) and travel north along the temporary haul road toward the A583 (thus avoiding the Preston Guild Wheel cycle route). **Section 1.4.5** outlines details of how agreed routes for HGVs will be communicated.

1.12.6 Starr Gate access

- 1.12.6.1 The Applicants have identified a potential need for low-tide vessels to be launched during construction activities to facilitate installation of the landfall. Access to the beach in the event of emergencies would also be required.
- 1.12.6.2 To facilitate this, the Applicants propose that access could be taken via access 1 (as shown in **Appendix B**) from the existing boat ramp from Starr Gate. Access would be infrequent and only required by light vehicles (e.g. a 4x4 towing a trailer). No HGVs would be permitted to access via Starr Gate.
- 1.12.6.3 To manage the potential for any conflict on the boat ramp and Starr Gate, drivers would be required to travel with a banksperson. The banksperson would be responsible for managing traffic and non-motorised users to ensure that the boat can traverse down the ramp.
- 1.12.6.4 The CTMPCo would also undertake regular inspections and clearing of any sand on the road (which Blackpool Borough Council note can blow on to the road) to ensure that the existing waiting/parking restrictions on the road at Starr Gate remain visible and therefore can be enforced.
- 1.12.6.5 The final form of mitigation would be discussed and agreed with Blackpool Borough Council as part of finalising the detailed CTMP(s).

1.13 Management of highway safety

1.13.1 Existing accident record

- 1.13.1.1 Within section 7.6.5 of Volume, Chapter 7: Traffic and transport of the ES, an analysis of existing Personal Injury Accident data has been undertaken to identify clusters of Personal Injury Accidents (four or more occurring at the same location or within 25 m of each other). A further analysis looked at those clusters, severity, and any consistent contributory factors. No matters in relation to the existing highway layout or geometries were discovered to be the cause of the incidents.

1.13.2 Monitoring and mitigation for Transmission Assets

1.13.2.1 Management measures to minimise the impact on highway safety during the construction phase are:

- Driver inductions and training. Drivers would be informed of:
 - the areas with existing highway safety issues (through discussions with highway authorities) and appropriate training would be provided to minimise the effect on highway safety;
 - The areas where existing width may present localised constraints to the passage of two HGVs, appropriate induction and education would be provided to minimise the effect on highway safety and driver delay.
- Driver information packs. Any existing highway safety issues and width constraints would be highlighted to drivers within information packs provided inside their delivery instructions. If emerging road safety issues are identified through accident and near miss reporting the packs would be updated; and
- Near miss reporting. Drivers would be requested during the induction to report any collisions or near misses. This would allow any potential highway safety concerns to be identified early and remedial action taken.

1.13.2.2 Any injury accidents and near misses associated with the Transmission Assets construction vehicles will be monitored to identify if there are any emerging issues.

1.13.2.3 If emerging issues are identified localised mitigation measures would be proposed and agreed with the Highway Authorities ([inc. the M&MHSO on behalf of Lancashire County Council](#)) and incorporated into the detailed CTMP(s).

1.13.3 Highway condition

1.13.3.1 To establish the residual asset life of the highway and how any changes in HGV traffic could impact upon this, prior to the commencement of construction, the CTMPCo(s) will be required to undertake highway condition surveys for all roads, excluding A roads and motorways, within the traffic and transport study area.

1.13.3.2 The final form of surveys would be agreed with the relevant highway authority ([inc. the M&MHSO on behalf of Lancashire County Council](#)) however, it is envisaged that this would initially comprise of a Coarse Visual Inspection survey (in accordance with the UK Pavement Management System standard). This will record the general surface condition of the highways, verges and footways.

1.13.3.3 These results would be shared with the relevant highway authority ([inc. the M&MHSO on behalf of Lancashire County Council](#)) to define areas where more detailed surveys may be required, and the form of these surveys (e.g. deflectograph surveys or core samples).

-
- 1.13.3.4 The results of the surveys would be interrogated to establish the residual asset life of the highway and if there would be a requirement for preventative maintenance, e.g. works to repair/strengthen the highway, refreshing of road markings and cutting back of vegetation in advance of the construction.
- 1.13.3.5 Where measures are required, these would be discussed with the relevant highway authority ([inc. the M&MHSO on behalf of Lancashire County Council](#)) and either delivered by the Contractor(s) or a financial contribution ([that would fully refund the required works](#)) made to the relevant highway authority to deliver the works. [This would be determined by the relevant highway authority \(inc. M&MHSO for Lancashire County Council\).](#)
- 1.13.3.6 Once construction activities have ceased in a given location the surveys would be repeated to identify any significant changes in highway condition. The results will be discussed with the relevant highways authority ([inc. M&MHSO for Lancashire County Council](#)) to agree:
- if the damage has directly resulted from the passage of HGVs associated with construction work; or
 - if the passage of HGVs associated with the construction works has proportionately contributed toward the damage.
- 1.13.3.7 Following the agreement of the damages, a remediation strategy will be discussed with the relevant highways authorities- ([inc. M&MHSO for Lancashire County Council](#)). This would either include a proportionate financial contribution being made to the highway authorities to cover the cost of remedial works or the Contractor(s) undertaking the repairs. The timescales for agreeing and implementing the remediation strategy would be discussed and agreed with the relevant highway authority ([inc. M&MHSO for Lancashire County Council](#)) prior to the commencement of construction and would be detailed within the final detailed CTMP(s).
- 1.13.3.8 In addition to undertaking surveys prior to and on completion of the construction works, the CTMPCo(s) would also undertake regular inspections of sections of the highway network to identify any emerging issues (such as damage to verges, potholes forming, lining fading or vegetation becoming overgrown). The frequency of these surveys, [subsequent reporting and timescales for the delivery of any required remediation works](#) would be agreed with the highway authorities ([inc. M&MHSO for Lancashire County Council](#)) prior to the commencement of construction-, [and included within the detailed CTMP\(s\).](#)
- 1.13.3.9 Where [the M&MHSO \(on behalf of Lancashire County Council\) is made aware of](#) emerging issues ~~are identified~~ as a result of the Transmission Assets construction traffic, [identified by either the contractor, through its own monitoring or through external sources such as the general public,](#) the CTMPCo(s) would request the relevant highway authority to undertake the repairs (with any relevant costs being recharged to the Contractor). [Where the M&MHSO \(on behalf of Lancashire County Council\) is made aware of issues through external sources, where](#)

relevant the M&MHSO (on behalf of Lancashire County Council) will inform the CTMPCo(s) for further review and, if required, remediation.

- 1.13.3.10 The approach for funding of ongoing maintenance works shall be agreed with the relevant highway authority (inc.M&MHSO on behalf of Lancashire County Council) prior to commencement of the projects and included within the detailed CTMP(s) with sufficient funding always being available for the relevant highway authority to access. The level of available funding to be agreed with the relevant highway authority. It is proposed that the final form of agreement between the Applicants and the relevant highway authorities would be via a Section 278 Highways Act 1980 agreement, unless agreed otherwise. Provision will also be made for any reasonable costs incurred by the relevant highway authorities in administering the Transmission Assets impact on the highway network and any necessary remedial action.

1.14 Transport Working Group

- 1.14.1.1 Prior to the commencement of construction, the CTMPCo(s) would establish a Transport Working Group (TWG) to assist the highway authorities in coordinating the competing requirements from the schemes within the traffic and transport study area.
- 1.14.1.2 The highway authorities would be requested to nominate staff and invite relevant third-party members to the TWG. It is expected that membership would include the nominated staff from the highway authorities, (inc. the M&MHSO on behalf of Lancashire County Council) the CTMPCo(s), and other major infrastructure projects under construction at the same time as the Transmission Assets.
- 1.14.1.3 The TWG would allow developers to discuss matters and coordinate with the aim of minimising disruption where practicable. Topics for discussion could include opportunities for coordination in relation to:
- Road works and road/lane closures;
 - Forecast peak HGV demand;
 - Any existing issues that may be exacerbated as a consequence of the projects and area for improvement;
 - Any emerging issues, areas for improvement, lessons learnt that can be shared or further changes to the highway network or changes to the approach in delivery of the project;
 - Highway improvements; and
 - Timing of AIL movements.
- 1.14.1.4 It is proposed that TWG meetings will be monthly, unless agreed otherwise between the members of the TWG. The membership of the TWG will be kept under review throughout construction, with members added or removed as required.

1.15 Monitoring of the CTMP

1.15.1 Compliance and monitoring

- 1.15.1.1 Compliance with all the monitoring plans, including the detailed CTMP(s) will be monitored and a responsibility of the CTMPCo(s).
- 1.15.1.2 The CTMPCo(s) will be responsible for ensuring that all sub-contractors are aware of the requirements of the detailed CTMP(s) and of the monitoring obligations.
- 1.15.1.3 The role of the CTMPCo(s) will continue throughout the onshore construction duration. They will be the central point of contact for all monitoring processes during their respective construction phases.

1.15.2 HGV numbers

- 1.15.2.1 To ensure compliance with the assessed daily HGV trips (outlined in Table 7.21 of the ES), the CTMPCo(s) would operate a booking system for all deliveries. The booking system would be monitored (by the CTMPCo(s)) to ensure the assessed number of trips are adhered to.
- 1.15.2.2 The CTMPCo(s) will implement a system to record the arrival and departure times and number plate of HGVs at each access.

1.15.2.3 The detailed CTMP(s) will include caps for maximum daily and average daily expected HGV movements at each access and on each route. While movements to the sites will be monitored as part of the detailed CTMP(s), it may be the case that HGVs caps will change having regard to lesser or greater impacts than anticipated.

1.15.2.4 As construction works progress, HGV caps to be reviewed by the relevant Highway Authority (M&MHSO for Lancashire County Council), working closely with the CTMPCo(s), on a frequent basis (frequency to be included within the detailed CTMP(s)) using data (having regard to complaints and issues received). Any changes to HGVs caps and timescales for the implementation would be agreed with the highway authorities (M&MHSO for Lancashire County Council), and included within the detailed CTMP(s).

1.15.3 HGV routing

- 1.15.3.1 The CTMPCo(s) will be responsible for implementing a system whereby construction HGVs employed on the Transmission Assets are identifiable from other traffic on the network. It is proposed that each vehicle would be required to display a unique identifier within the window of the cab (a recognisable logo) that would allow members of the public to report any concerns such as driver behaviour or the use of unapproved routes via a published telephone contact number. Prior to the commencement of the construction of the relevant phase, the CTMPCo(s) will submit details of the unique identifier to the highway authorities for their records.

-
- 1.15.3.2 To assist the CTMPCo(s) in responding to any complaints regarding HGV routing, the booking system would provide an initial check. The booking system would allow the CTMPCo(s) to check if the reported HGV may have been employed in delivering to the Transmission Assets, e.g. allowing checking of number plates, supplier names, scheduled timings and origin and destination, etc.
- 1.15.3.3 The CTMPCo(s) will also ensure data will be collected from HGVs that are fitted with monitoring devices (such GPS tracking) to record their routes, timing and speeds will be made available to aid any compliance investigations.
- 1.15.3.4 The registration numbers and unique identifier for all construction HGVs accessing compounds would be recorded.
- 1.15.3.5 The registration numbers and unique identifier, together with the delivery records would serve to augment data from vehicle monitoring to allow the CTMPCo(s) to respond to any complaints and provide a complete evidence base.
- 1.15.3.6 Establishing these central points of contact will help to ensure that all works in a given location at a given time will be the responsibility of a single individual to ensure clarity of responsibility and to facilitate effective communication.
- 1.15.3.7 Monitoring activities and responsibilities will be agreed with the relevant highways authority as a part of the detailed CTMP(s). The detailed CTMP(s) will include contact details of those responsible for the detailed CTMP(s) along with a clear schedule of monitoring activities and timescales.

1.15.4 Employee monitoring

- 1.15.4.1 The CTMPCo(s) will require all employees and visitors to sign in and out when arriving/departing site. This process would capture travel details including the employee's method of travel to work and arrival / departure times and origin.

1.15.5 Monitoring records

- 1.15.5.1 Data recorded from the monitoring processes outlined above would be drawn together by the CTMPCo(s) to produce a monthly monitoring report during construction of the relevant phase and shared with the highway authorities ([inc. the M&MHSO for Lancashire County Council](#)).
- 1.15.5.2 A typical structure for a monitoring report would be as follows:
- Introduction and background – this will provide detail with regards to the location and types of works being undertaken;
 - Results of surveys and monitoring – the CTMPCo(s) will collate the results of surveys and monitoring that have been undertaken, including:
 - HGV numbers
 - Routes compliance/contraventions

- Arrival and departure times
- Road safety
- Employee mode share
- Complaints and non-compliance – this will include detail of any complaints received, or non-compliances identified and details of the measures taken to rectify the matter and prevent future occurrences (these matters would also be discussed directly with the highway authorities);
- Achievements – this will include the work undertaken over the previous period with evidence and examples;
- Summary – the CTMPCo(s) will detail whether the CTMP is on track to meet its targets and if not, why not and how this will be rectified.

1.15.5.3 The final structure would be subject to agreement with the relevant highway authority ([inc. the M&MHSO for Lancashire County Council](#)) and will be kept under review for the lifetime of the CTMPs.

1.15.5.4 In compiling the monitoring report, the CTMPCo(s) would be able to identify effective / ineffective measures and the requirement for any remedial action to achieve the agreed targets.

1.15.5.5 Any auditing or corrective action will be monitored. This will ensure that the construction activities are being undertaken in accordance with the approved CTMP.

1.15.5.6 The procedure for addressing breaches and ensuring corrective action is undertaken is below.

- A log will be used to record details of any traffic and transport related incident and or non-compliance with the detailed CTMP(s).
- A log will also be used to record any inadequacy as a result of monitoring, inspection, surveillance and complaint.
- The log will also record any actions taken, any action required will be allocated to the appropriate person, along with a timescale for the action to be undertaken.

1.15.5.7 Records of the above will be retained by the CTMPCo(s).

1.15.6 Enforcement and corrective measures

1.15.6.1 To ensure that the detailed CTMP(s) can be effectively enforced, the following matters have been defined as non-compliance that would be investigated to understand if corrective measures would be required:

- Exceedance of ~~target~~capped ([peak and average](#)) daily HGV numbers;
- Failure to display the unique identifier, or to remove the unique identifier when not making deliveries to the Transmission Assets;
- Construction workers overspill parking on the public highway;

- HGV drivers parking/waiting at non-designated locations;
- Vehicles being driven in contravention of the highway code;
- Construction traffic operating outside agreed hours; or
- HGV drivers not adhering to the agreed routes / times.

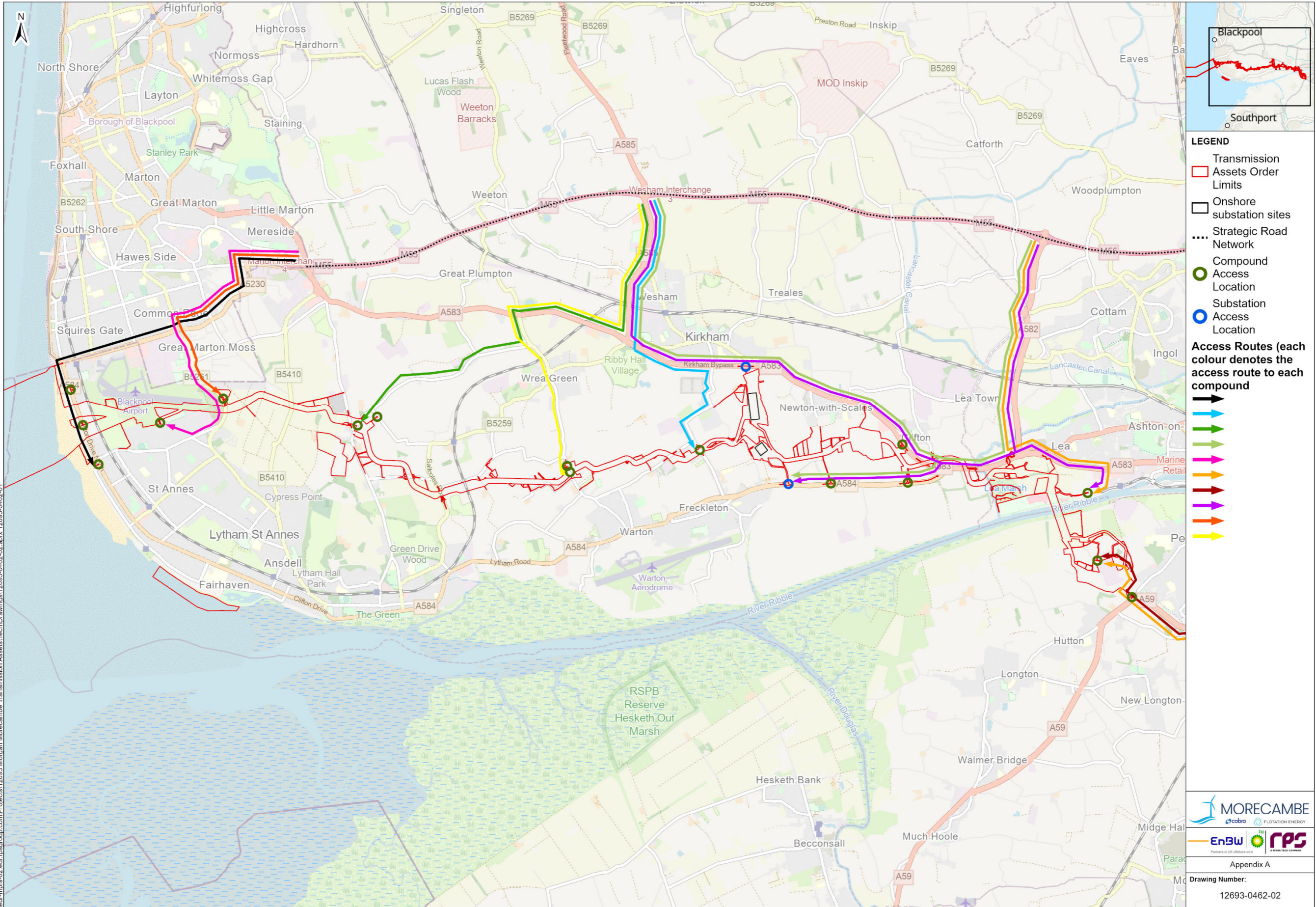
- 1.15.6.2 If the CTMPCo(s) are made aware of a potential non-compliance of the detailed CTMP(s) (except where otherwise agreed with the relevant highway authority ([inc. the M&MHSO for Lancashire County Council](#)) or in the event of an emergency), they will be required to investigate the circumstances and create a report for the relevant ~~highways~~ [highway](#) authority ([inc. the M&MHSO for Lancashire County Council](#)) within no more than five working days (unless agreed otherwise with the relevant highway authority ([inc. the M&MHSO for Lancashire County Council](#)) that additional time is required).
- 1.15.6.3 The report would outline the outcome of the investigation and what corrective action (as necessary) has been implemented. If the non-compliance is found to be material, the CTMPCo(s) would take appropriate action within the jurisdiction of the contract and report back to the relevant highway authority- ([inc. the M&MHSO for Lancashire County Council](#)).
- 1.15.6.4 The final approach to corrective action cannot be fully defined at this outline stage as a contractor has not been appointed. However, the local highway authorities have advised that they would expect a disciplinary process which would culminate in the offending driver being removed from the Project for a repeated non-compliance.
- 1.15.6.5 The Applicants will only appoint a contractor that complies with a disciplinary process that retains the ability to remove a repeat non-compliant driver from the Project.
- 1.15.6.6 The final form of the corrective action process would be detailed within the final detailed CTMP(s).

1.16 **References**

Department for Transport/Welsh Government/Transport Scotland/Department for Infrastructure (2009) Traffic Signs Manual Chapter 8, Traffic Safety Measures and Signs for Road Works and Temporary Situations Part 1: Design. Available at: <https://assets.publishing.service.gov.uk/media/5a74adeaed915d7ab83b5ab2/traffic-signs-manual-chapter-08-part-01.pdf>. Accessed: May 2025.

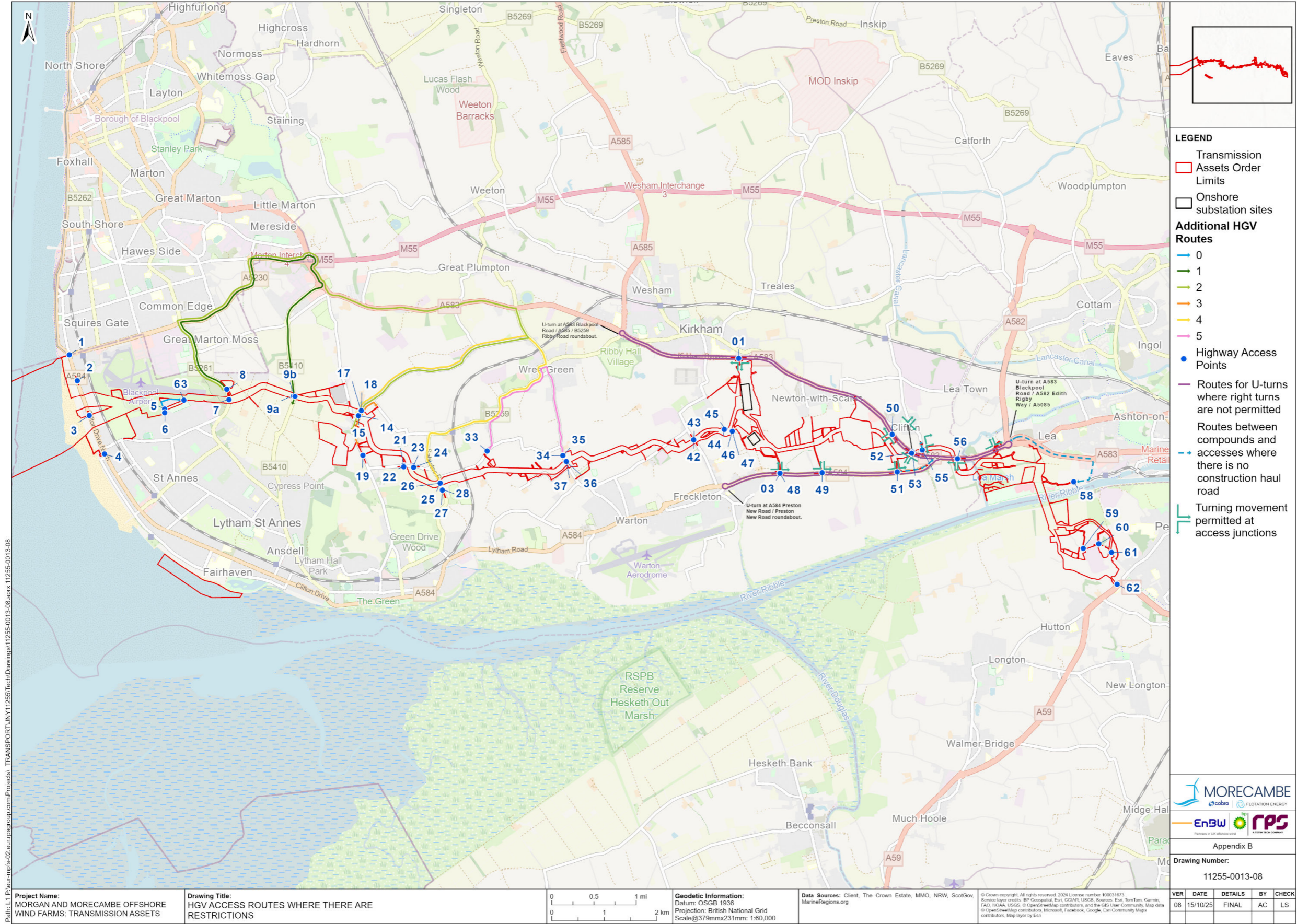
The Secretary of State for Transport (2003) The Roads Vehicles (Authorisation of Special Types) (General) (Order). Available at: <https://www.legislation.gov.uk/uksi/2003/1998/article/4/made?view=plain>. Accessed: May 2025.

Appendix A: Indicative construction vehicle route plan



Project Name: MORGAN AND MORECAMBE OFFSHORE WIND FARMS: TRANSMISSION ASSETS		Drawing Title: CONSTRUCTION ACCESS ROUTES		Geodetic Information: Datum: OSGB 1936 Projection: British National Grid Scale@379mmx231mm: 1:60,000		Data Sources: Client, The Crown Estate, MMO, NRW, ScotGov, MarineRegions.org		© Crown copyright. All rights reserved. 2024 License number 100031673. Service layer credits: BP, Geoposition, Esri, CGAAR, USGS, Sources: Esri, TomTom, Garmin, FARO, NOAA, USGS, © OpenStreetMap contributors, and the GIS User Community. Map data © OpenStreetMap contributors, Microsoft, Facebook, Google, Esri Community Maps contributors. Map layer by Esri		VER 03		DATE 02/10/25		DETAILS FINAL		BY AC		CHECK LS	
Path: L:\P\eur-mps-02.eur.rpsgroup.com\Projects\12693-Morgan Morecambe Transmission Assets\TechDrawings\12693-0462-02.aprx 12693-0462-01		Logos: MORECAMBE, EnBW, RPS		Appendix A		Drawing Number: 12693-0462-02													

Appendix B: Additional indicative HGV routes plan



Appendix B
Drawing Number:
11255-0013-08

VER	DATE	DETAILS	BY	CHECK
08	15/10/25	FINAL	AC	LS

Appendix C: Last Leg Mitigation Measures (Excluding Associated Lining and Signing)

